

OSAKA, KANSAI, JAPAN

EXPO
2025

Expo 2025 Osaka, Kansai, Japan

Overview of Event Facilities

Ver.2

December 2023 version

Overview of Event Facilities

This Overview of Event Facilities is current as of December, 2023. Please be aware that changes may occur in the future. Facility usage fees do not include facility maintenance fees (common service charges, etc.). Details will be provided once confirmed.

- Period of use: Sunday, April 13 to Saturday, October 11, 2025
* The Expo runs until Sunday, October 12
- Usage hours: 9am to 9pm
- Usage outside of normal hours: An out-of-hours usage charge is incurred for use before 9am and after 9pm.
- Application: We request that you include time for loading items in and out, for setting up or taking down, for rehearsals, etc. when applying.
* Time for bringing items in and out, for setting up or taking down, and for rehearsals may fall outside facility hours due to the organization of the event.
- Facility usage fees:

Tax included

Event Facility * All facility names are tentative	Facility Overview (Subject to change)	Reservation Category Time Slots	Fee Per Slot	All Day Use (9am - 9pm)	1 Hour Out-of-hours	Common service fee (per 3 hours)
EXPO Arena	former Name: Outdoor Event Space Covered stage + plaza Plaza (standing capacity: 10,000)	1) 9am to 12pm 2) 12pm to 3pm 3) 3 to 6pm 4) 6 to 9pm	¥254,100	¥1,016,400	¥106,700	¥85,400
Pop-Up Stages (Outer East/Inner East/ West/North)	former Name: Small Stages Around 50 m ² covered stage Spectator space (walkway and plaza)	1) 9am to 12pm 2) 12pm to 3pm 3) 3 to 6pm 4) 6 to 9pm	¥23,100	¥92,400	*1	¥7,670
Pop-Up Stage South	former Name: Japanese Traditional Culture Area (Outdoor Small Stage) Covered outdoor stage Spectator space (for 300)	1) 9am to 12pm 2) 12pm to 3pm 3) 3 to 6pm 4) 6 to 9pm	¥26,400	¥105,600	¥11,000	¥12,400

* 1 Please note, the facility usage time should be completed in installation and dismantling within the reservation time.

If there is an unavoidable reason for exceeding the reservation time, please consult with the Association in advance.

As overtime fee, facility usage, service fee, personnel cost, etc. will be charged for the event organizers. Details will be shared on the consultations.

Precautions related to facility usage fees

- Other costs may apply.
- Usage times include all time required for use, from the entry of the first participant until the exit of the last participant.
- Usage time includes time present during explanations for how to use permanent event facility equipment and time needed for maintenance.

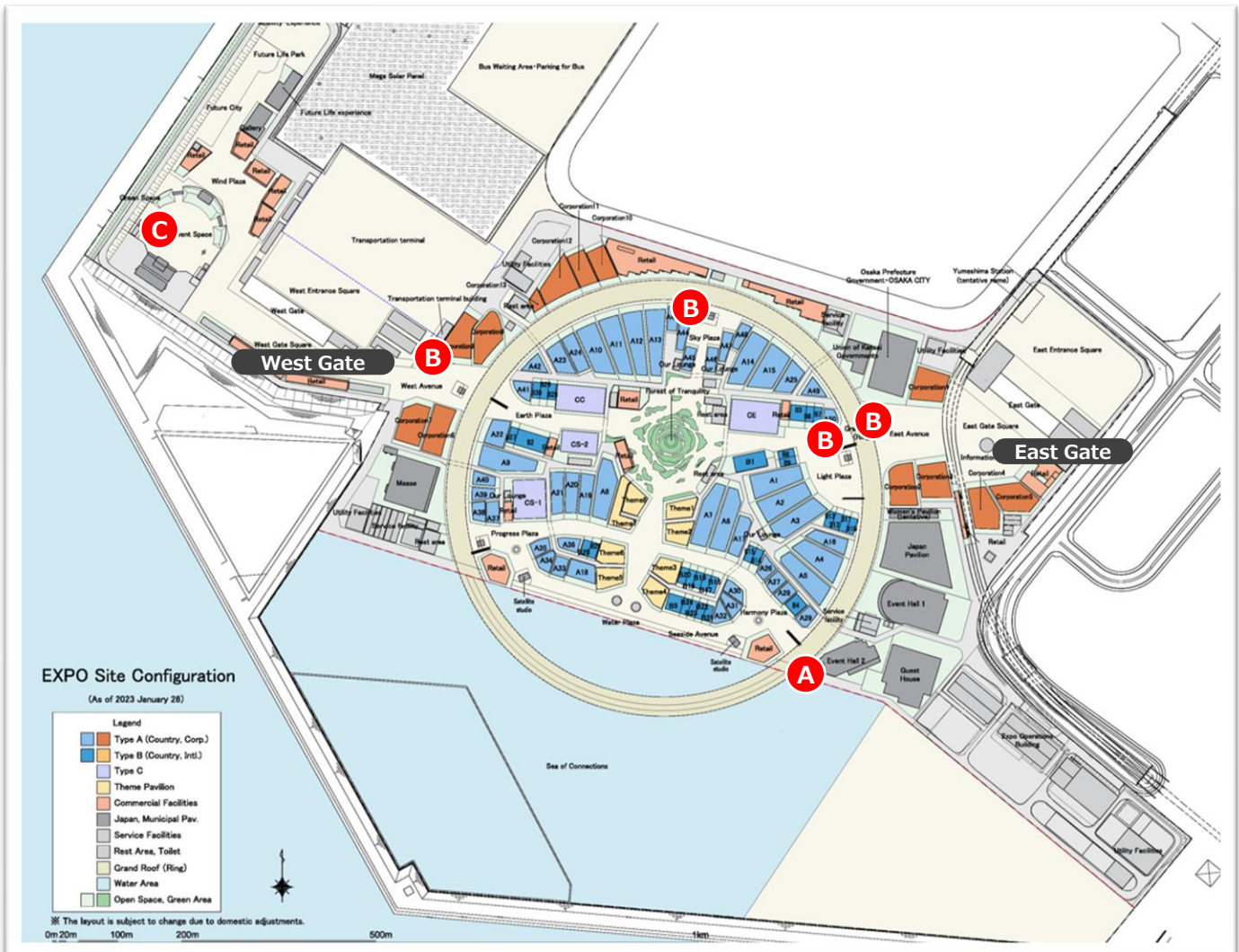
* You will be informed of cancellation fees and common service charges after an internal decision is made.



Overview of Event Facilities

Overview of Event Facilities

Facilities Layout



* All details listed in this document are current as of the time of publication, and are subject to change.

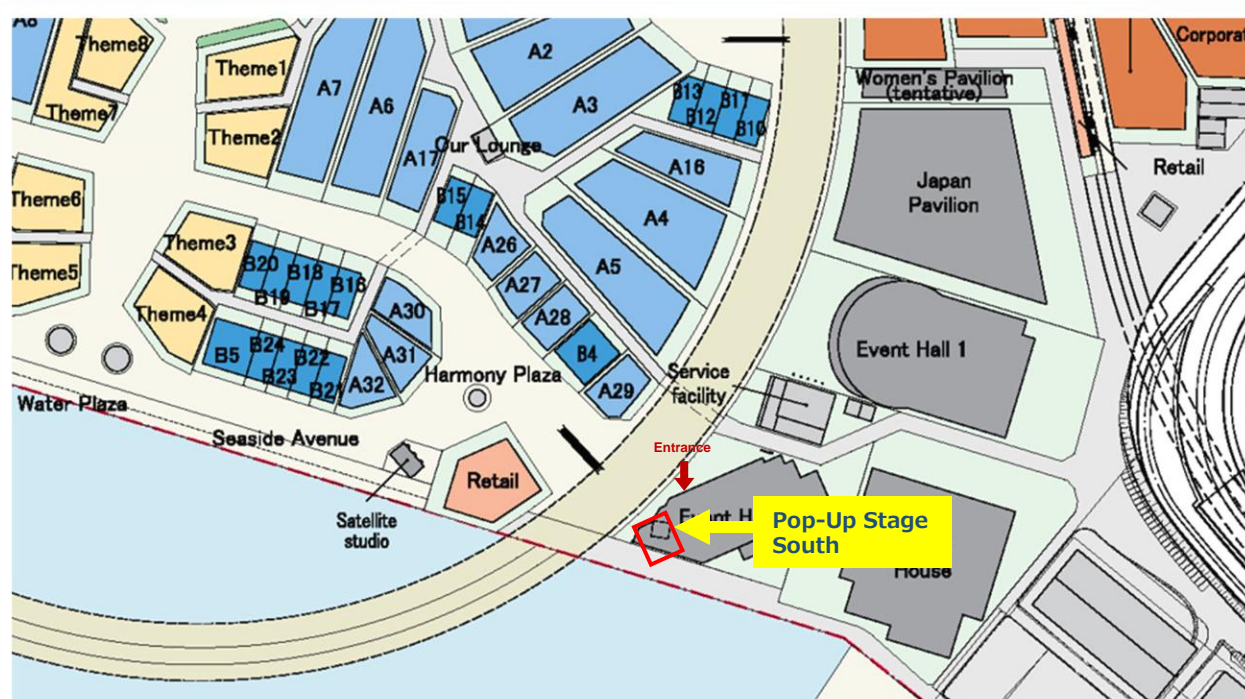
	Official name	former Name	Facility Details	Indoor/Outdoor
A	Pop-Up Stage South	Japanese Traditional Culture Area (Outdoor Small Stage)	Covered outdoor stage Viewing space: Square in front of the stage	Outdoor
B	Pop-Up Stages (Outer East/Inner East/ West/North)	Small Stage	Covered stage of 50 m2 Viewing space: aisle in front of the stage, plaza	Outdoor
C	EXPO Arena	Outdoor Event Space	Covered stage + plaza Standing room: approx. 10,000 people	Outdoor

Overview of Event Facilities

A

Pop-Up Stage South

(former name: Japanese Traditional Culture Area Small Stage)



Pop-Up Stage South

former name:
Japanese Traditional
Culture Area Small Stage

Anticipated Performances

Performances of domestic and international performing arts, music, talk events, festivals, etc.

Facility Usage

1 hour per slot
9am to 9pm
(Reserved time includes from carry in up to removal, setting up and taking down)
Please consult with us about the usage time according to the content of your event.

Eating and drinking in the viewing area

Allowed

Commercial activities around the stage

Not Allowed
※Consultation required for tastings.

User Fees

Facility usage fees
common service charges,
etc.

See page 1 for details.

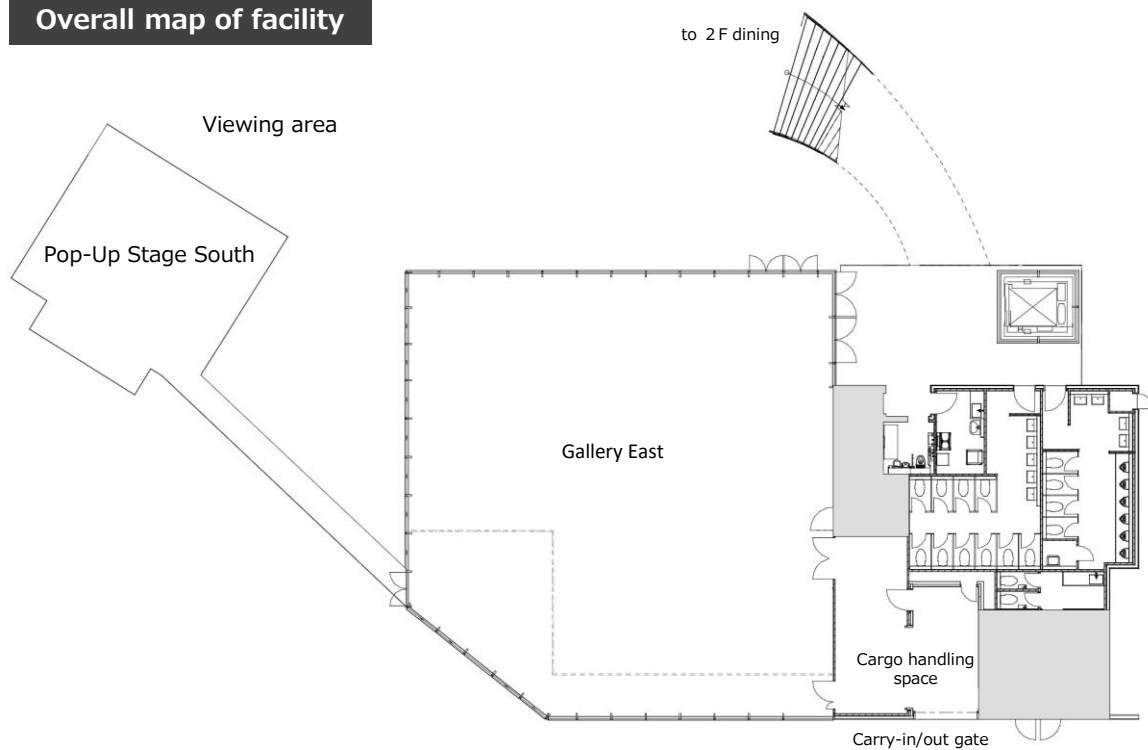
Note: Participants may host virtual events at the Pop-Up Stage South prepared in the Virtual Venue.
(Costs: refer to the fee table and providers list.)
Participants are asked to bring necessary equipment for distribution including cameras.

Facility overview

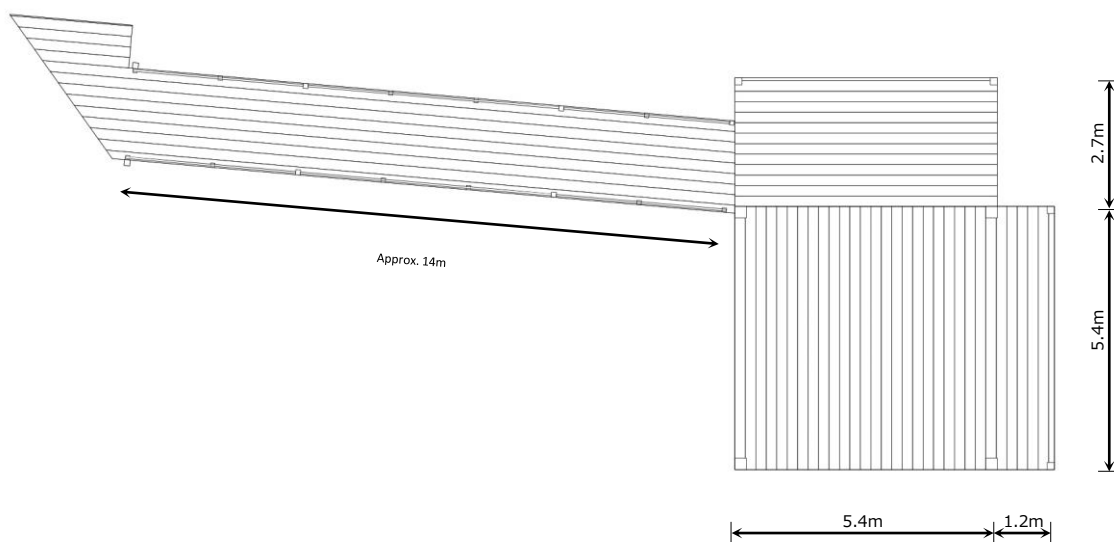
Architectural outline	Steel-framed
Seating capacity	Around 290 (no seats)
Stage type	Outdoor covered stage / passageway to stage (connecting stage and exhibition area)
Equipment overview	Sound, lighting, and basic equipment
Ancillary equipment	Small backstage area

A Pop-Up Stage South (former name: Japanese Traditional Culture Area Small Stage)

Overall map of facility

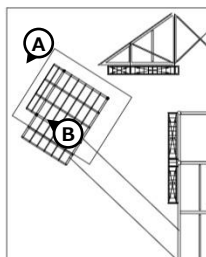


Ground plan of stage

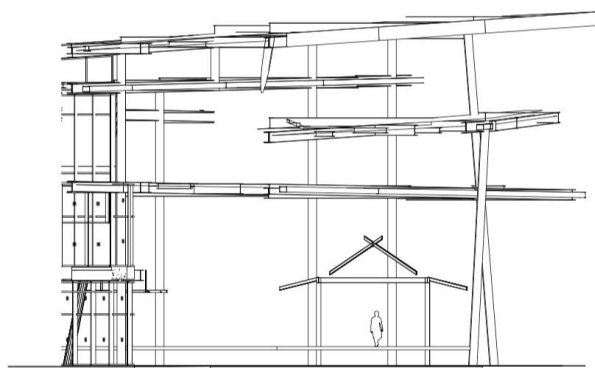


A Pop-Up Stage South (former name : Japanese Traditional Culture Area Small Stage)

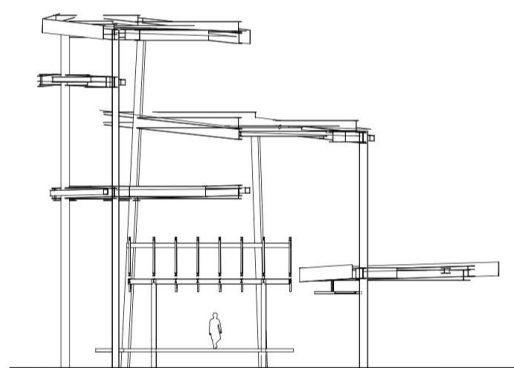
Cross-sectional plan of stage



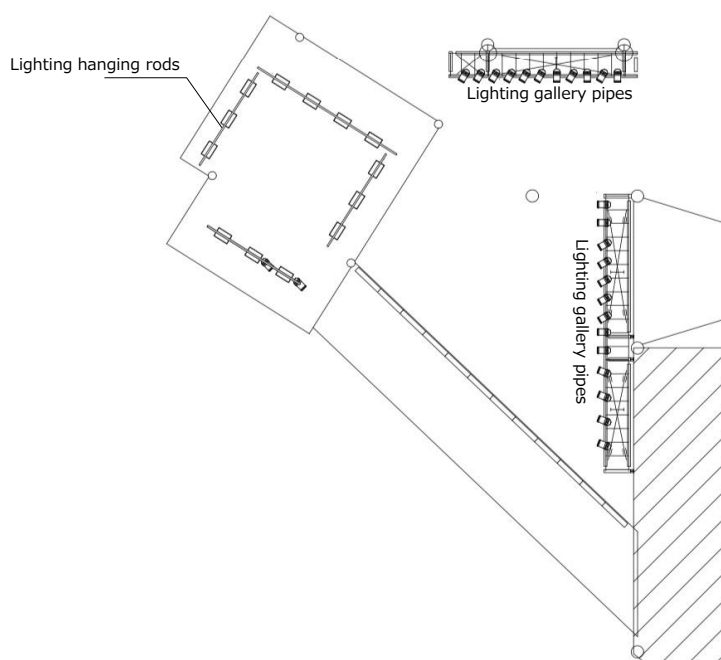
A



B



Lighting location map



Overview of Event Facilities



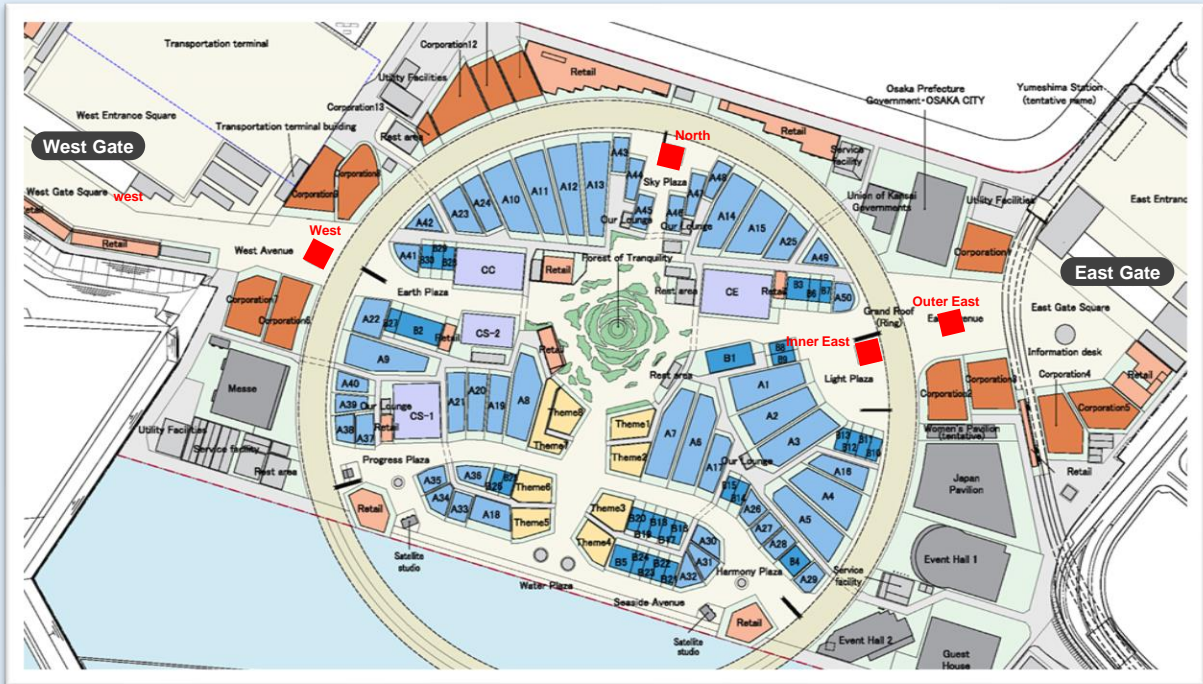
Pop-Up Stage South (former name : Japanese Traditional Culture Area Small Stage)

※ The information is based on current plans and is subject to change.
The information is subject to change in the future.

Overview of installed equipment		
Lighting	Lighting hanging rod	4: 2 D-type 20A respectively, DMX port
	Gallery pipe	2 locations: 2 D-type 20A respectively, DMX port
	Stage-level power supply	1 D-type 20A, DMX port
	LED PAR light	1 set
	LED flood light	1 set (rain-proof type)
	LED bar light	1 set (rain-proof type)
	Simplified light switch	ON-OFF switch (base light, light at stage front)
	Light modulation controller	AVO Quartz (12.1-inch touch panel, number of faders: 10, 4 DMX 512)
Sound system	Main speaker	1 set of column type array speakers, 1 set of subwoofers
	Monitor speaker	1 set of 2-way speakers
	Digital mixing console	1 set
	CD/memory deck	2
	Wireless microphone	1 set of pin microphones
	Microphone	8 boundary microphones, 2 hand-held microphones (with switches)
	Microphone stand	K&M; 2 boom stands

Overview of Event Facilities

* Located in 4 locations within the venue

B**Pop-Up Stages** (former name: Small Stages)**Anticipated Performances**

Music, talk events, performances, etc.

Facility Usage

In principle, on an hourly basis (daily: 9:00-21:00)

(Reserved time includes from carry in up to removal, setting up and taking down)

Please consult with us about the usage time according to the content of your event.

**Food and Drink in Spectator Space**

Allowed

Commercial Activities within the Facility and Spectator Space

Not allowed

※ Tastings for food and drinks on request

User Fees

- Facility usage fees
- Common service charges

See page 1 for details.

Facility overview

Stage overview	Around 50 m ²
Spectator space	Walkways and plaza in front of stage
Equipment overview	<ul style="list-style-type: none"> ● Basic sound and lighting equipment available ● Fixed or manual wind-up baton
Ancillary equipment	Backstage



Pop-Up Stage

Outer East (former name : small stage south)

Outer East

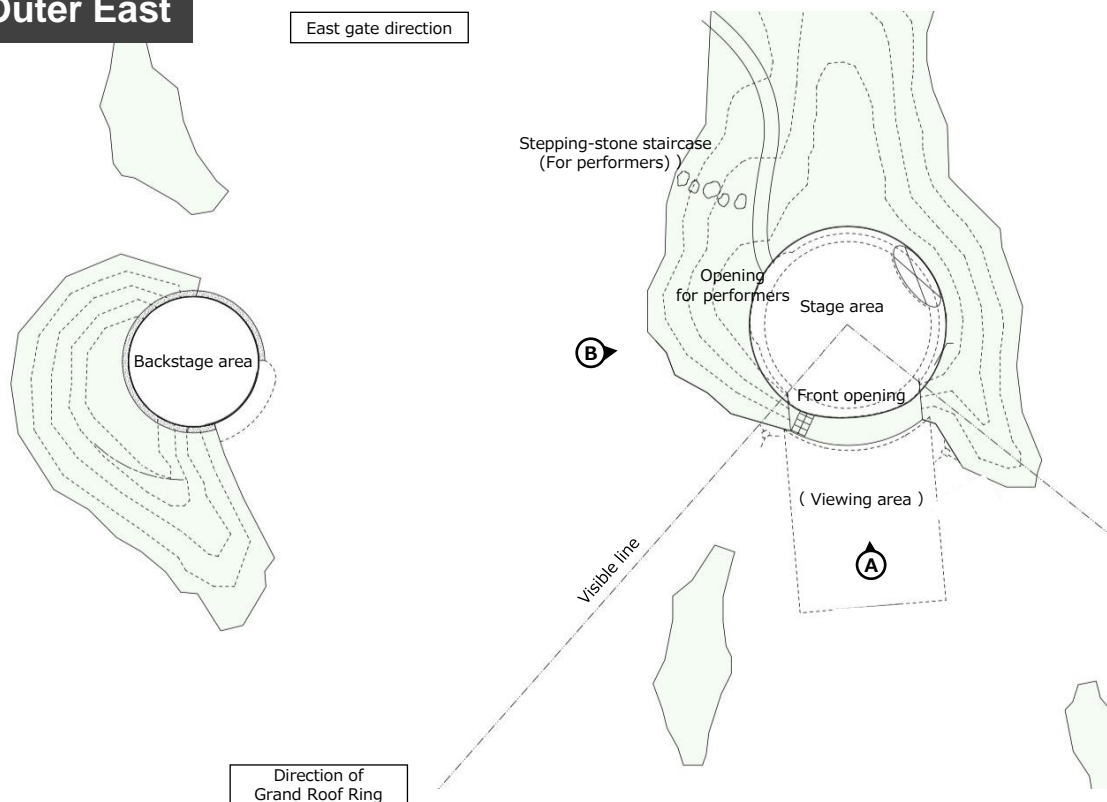
Inner East

West

North

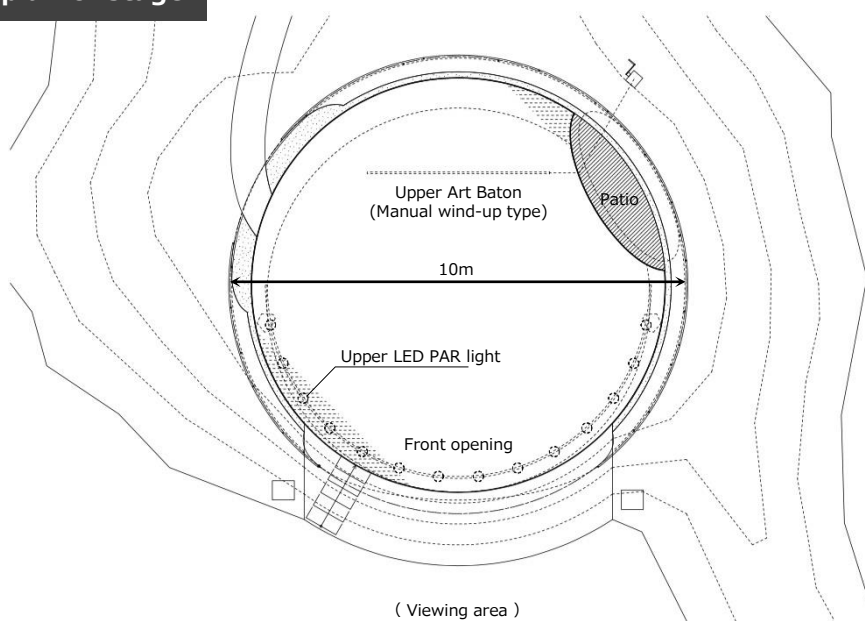
Outer East

East gate direction



Direction of
Grand Roof Ring

Ground plan of stage



B Pop-Up Stage Outer East (former name: Small stage south)

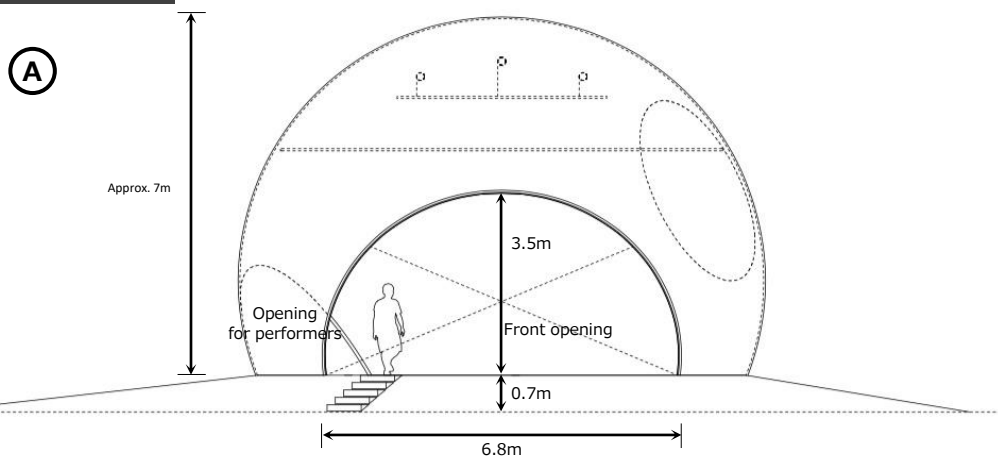
Outer East

Inner East

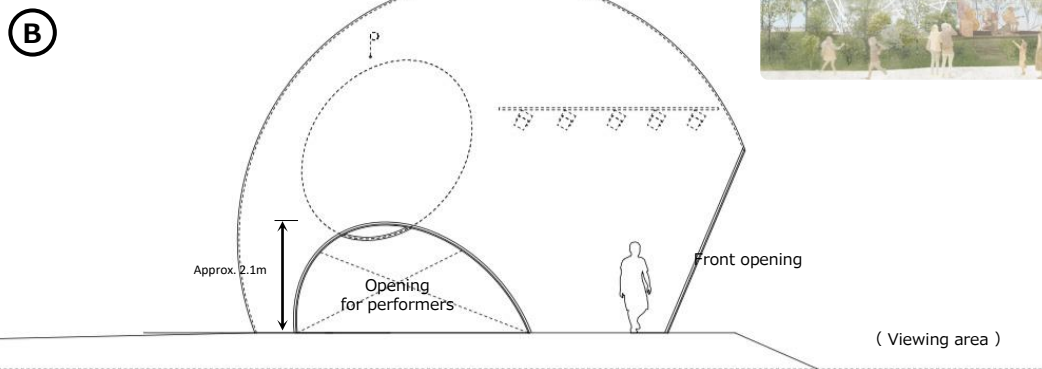
West

North

Stage elevation



Side view of the stage



※ The information is based on current plans. The information is subject to change in the future.

Overview of installed equipment

Stage equipment	Lighting hanging rod	2 (fixed)
	Hanging rod for stage set items	2 (fixed)
Lighting	LED PAR light	Currently being arranged
	DMX controller	Currently being arranged
Sound system	Speaker	Currently being arranged
	Power amplifier	Currently being arranged
	Digital mixer	Currently being arranged
	CD deck	Currently being arranged
	Microphone	Currently being arranged

B Pop-Up Stage Inner East (former name: Small Stage East)

Outer East

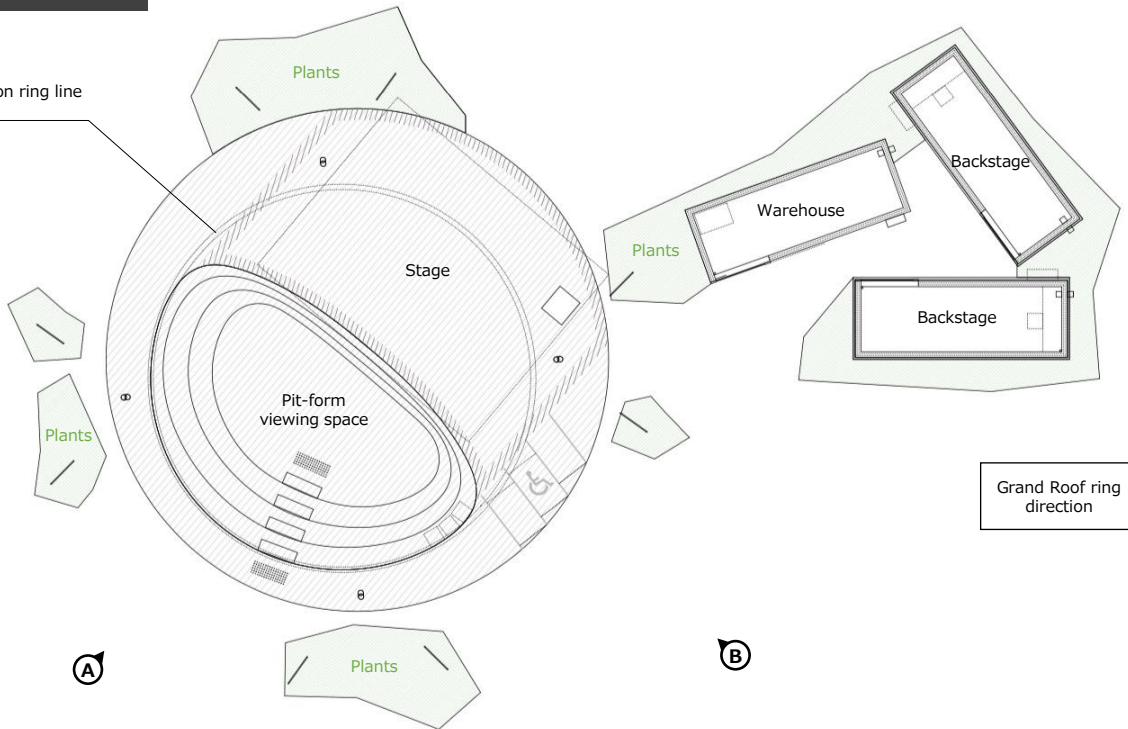
Inner East

West

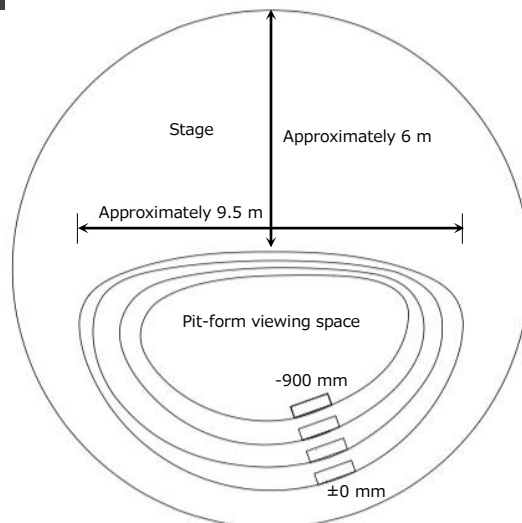
North

Inner East

Compression ring line



Ground plan of stage



B Pop-Up Stage Inner East (former name: Small Stage East)

Outer East

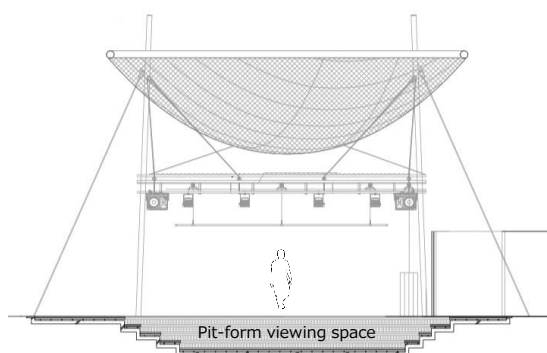
Inner East

West

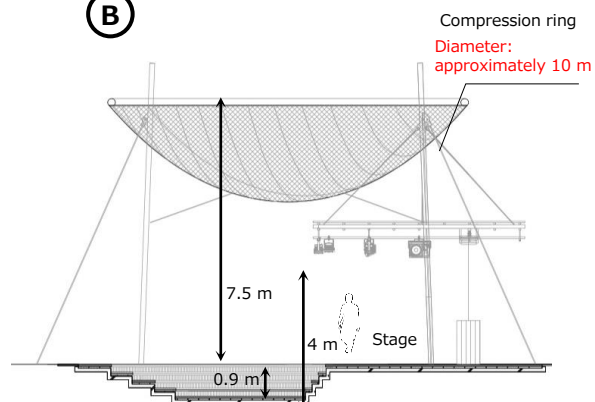
North

Cross-sectional plan of stage

A



B



※ The information is based on current plans. The information is subject to change in the future.

Overview of installed equipment

Stage equipment	Lighting hanging rod	2 (fixed)
	Hanging rod for stage set items	2 (1 fixed, 1 manual wind-lifting)
	Horizon curtain	Shading tarpaulin
Lighting	LED PAR light	Currently being arranged
	DMX controller	Currently being arranged
Sound system	Speaker	Currently being arranged
	Power amplifier	Currently being arranged
	Digital mixer	Currently being arranged
	CD deck	Currently being arranged
	Microphone	Currently being arranged

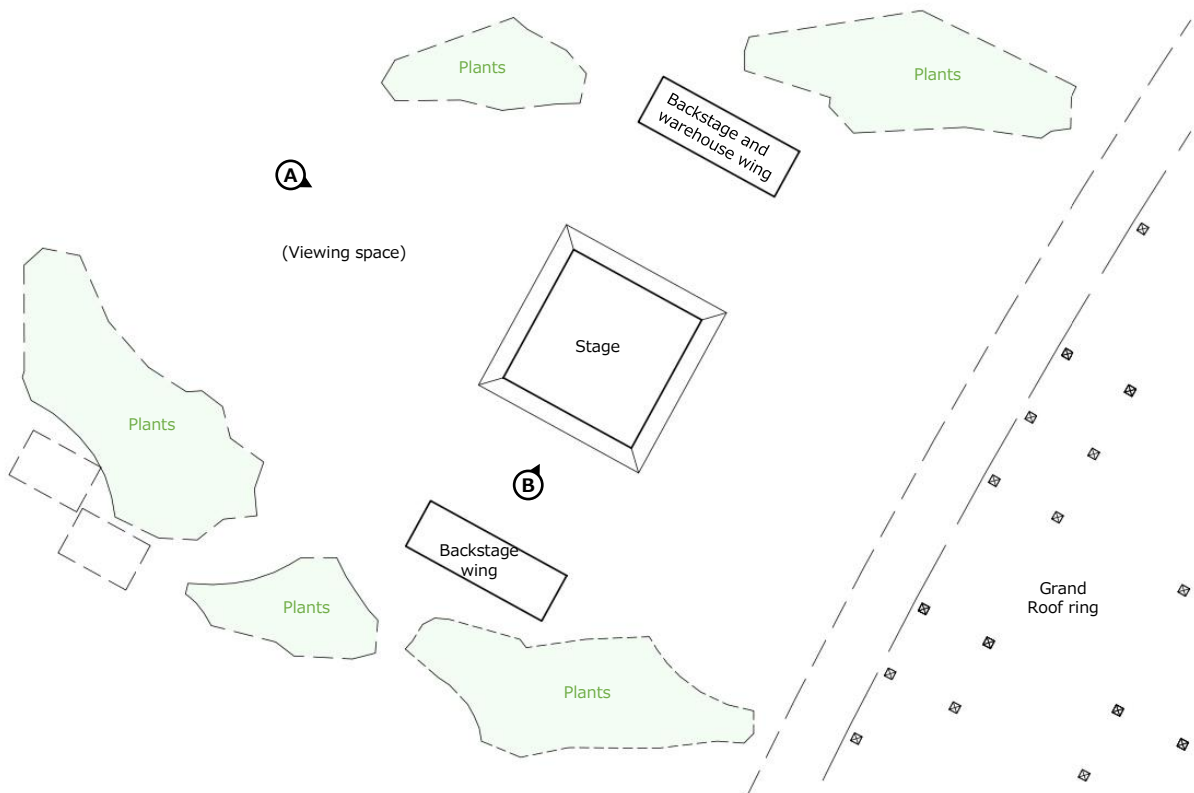
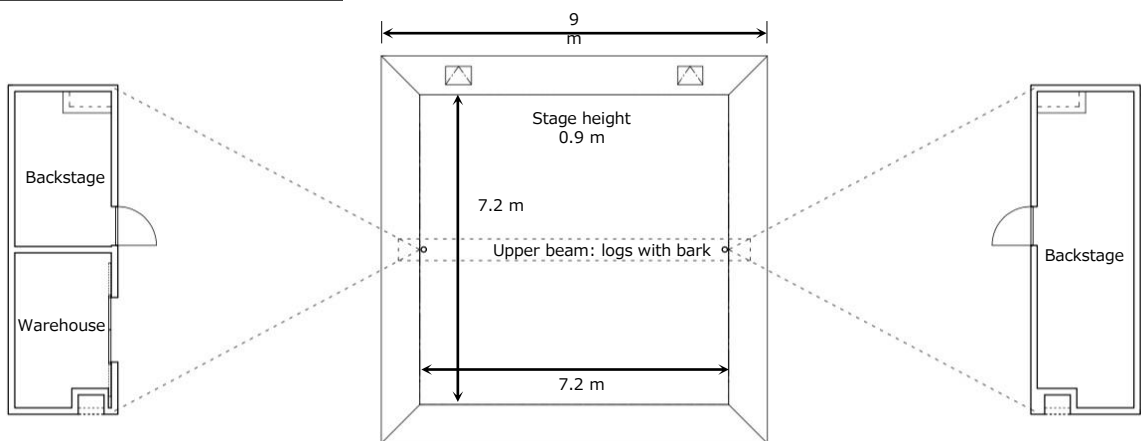
B Pop-Up Stage West (former name: Small Stage West)

Outer East

Inner East

West

North

West**Ground plan of stage**

(Viewing space)

B Pop-Up Stage West (former name: Small Stage West)

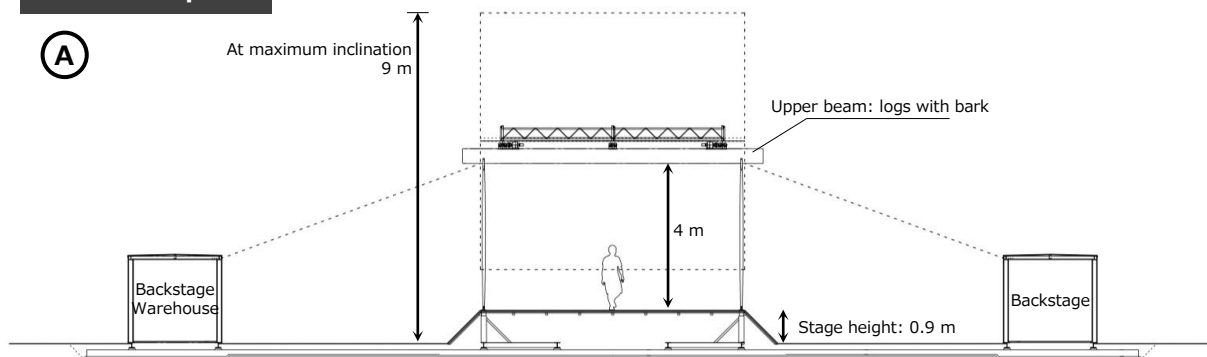
Outer East

Inner East

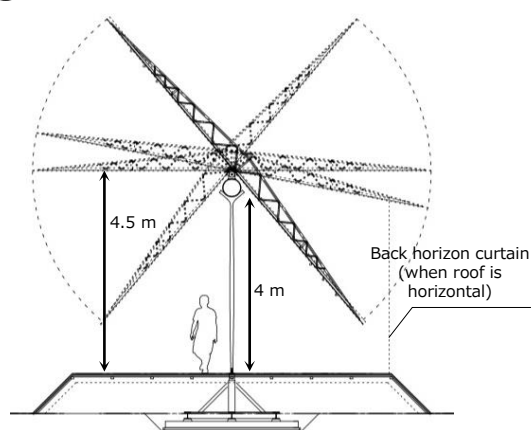
West

North

Elevation plan



Side plan of stage

B

※ The information is based on current plans. The information is subject to change in the future.

Overview of installed equipment

Stage equipment	Lighting hanging rod	2 (fixed)
	Hanging rod for stage set items	2 (fixed)
	Horizon curtain	Shading tarpaulin
Lighting	LED PAR light	Currently being arranged
	DMX controller	Currently being arranged
Sound system	Speaker	Currently being arranged
	Power amplifier	Currently being arranged
	Digital mixer	Currently being arranged
	CD deck	Currently being arranged
	Microphone	Currently being arranged

B Pop-Up Stage North (former name: Small Stage North)

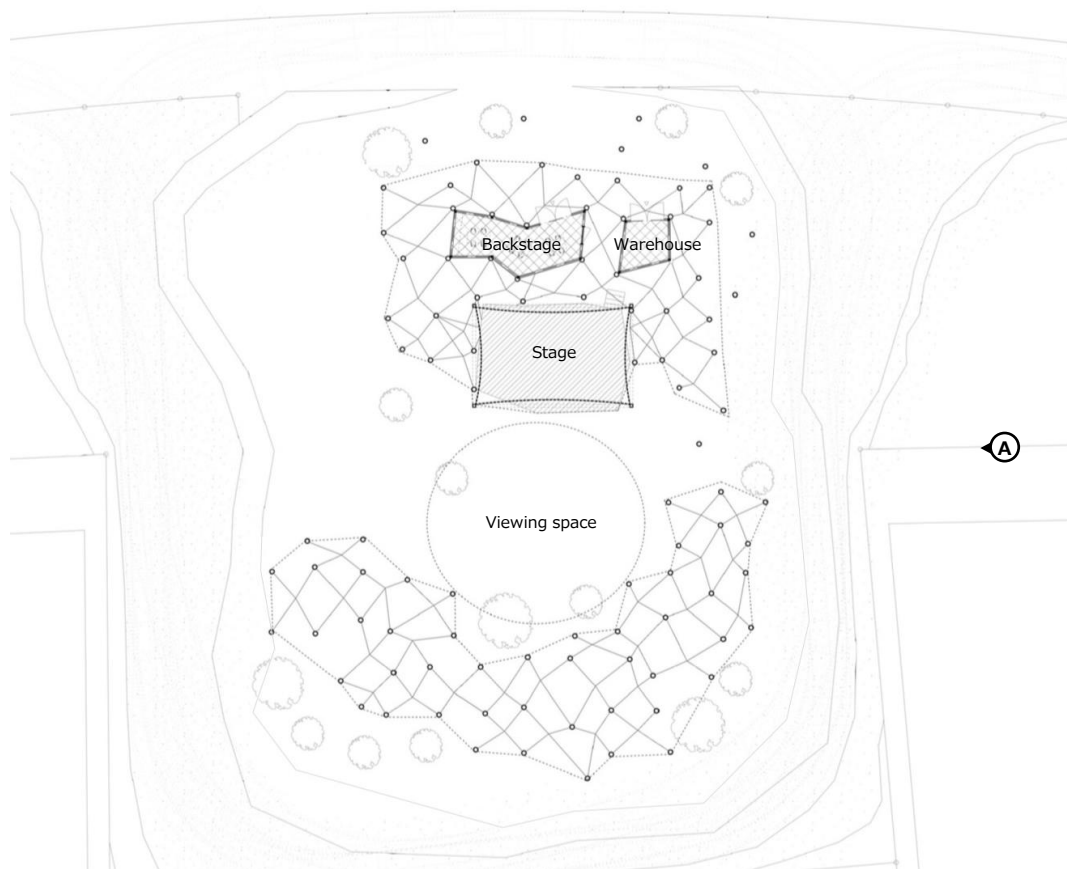
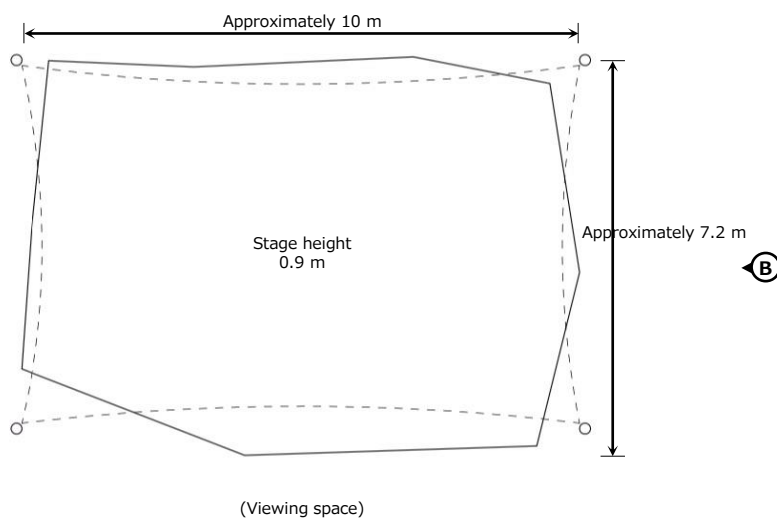
Outer East

Inner East

West

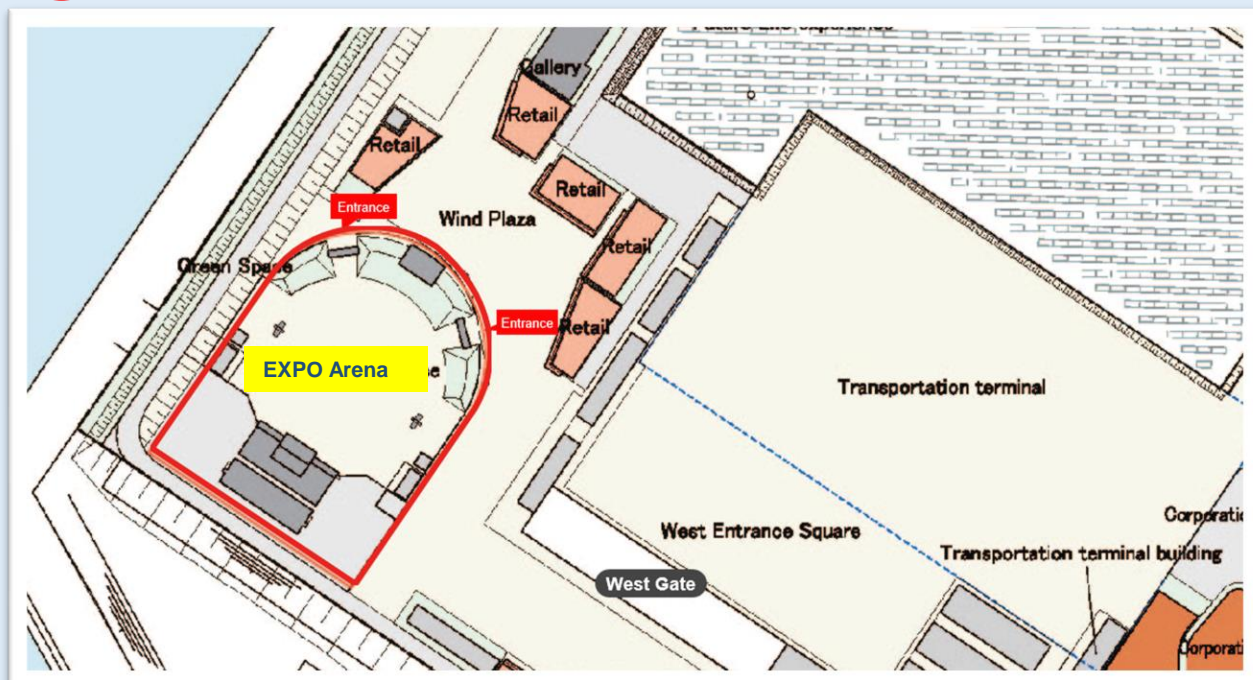
North**North**

Grand Roof ring direction

**Ground plan of stage**



EXPO Arena (former name: Outdoor Event Space)



Anticipated Performances

Large live concerts, Videoscreenings, outdoor festivals, cultural festivals, etc.

Facility Usage

① 9am to 12pm ② 12pm to 3pm ③ 3 to 6pm ④ 6 to 9pm

Apply for use based on the Reservation Category Time Slot as listed in the table of facility usage fees.

(Reserved time includes from carry in up to removal, setting up and taking down)

*Negotiable depending on event details



Food and Drink in Audience Area

Allowed

(Designated area only)

※ Designated areas will be described in the next update.

Commercial Activities within the Facility

Sales of merchandise and foods/beverages are both allowed. (Only in areas set out in prior consultation with the Organiser)

User Fees

- Facility usage fees
- Common service charges

See page 1 for details.

Note: Participants may host virtual events at the EXPO Arena prepared in the Virtual Venue. (Costs: refer to the fee table and providers list.)

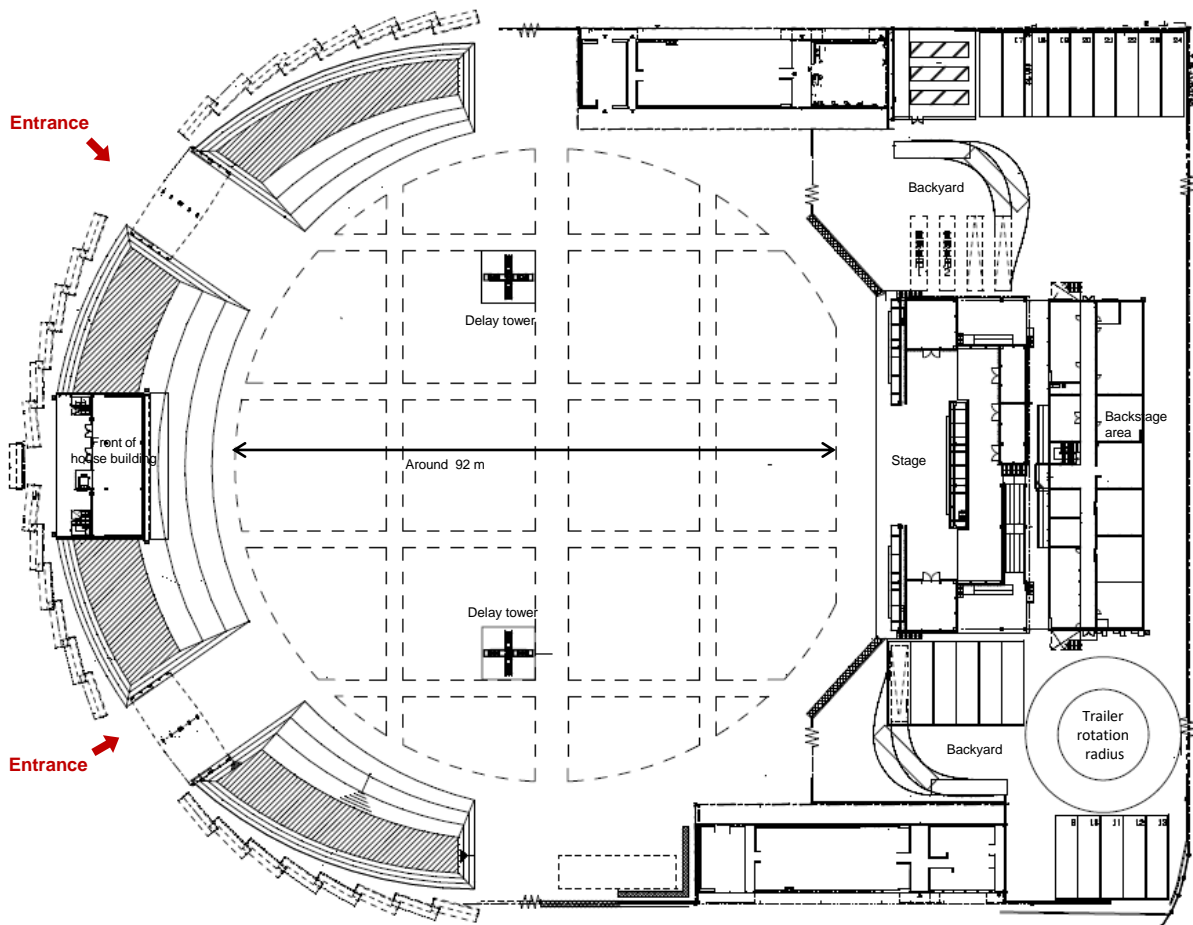
Facility overview

Architectural outline	Steel-framed
Seating capacity	10,000 (no seats/artificial grass covering floor of spectator area)
Stage type	Outdoor covered stage (frontage around 18 m, around 10 m high, 10.8 m deep)
Equipment overview	<ul style="list-style-type: none"> ● Sound, lighting, and basic equipment ● Large LED projection equipment ● Lowering projector screen ● Delay tower
Ancillary equipment	VIP rooms (front of house), backstage areas, merchandise sales building, etc.



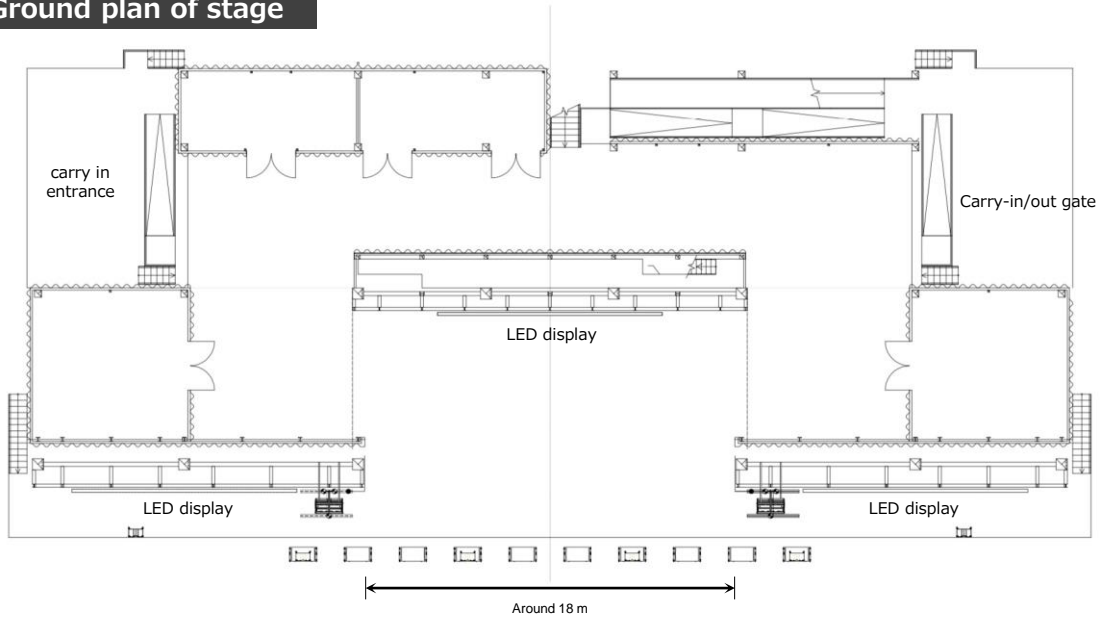
EXPO Arena (former name: Outdoor Event Space)

Floor plan

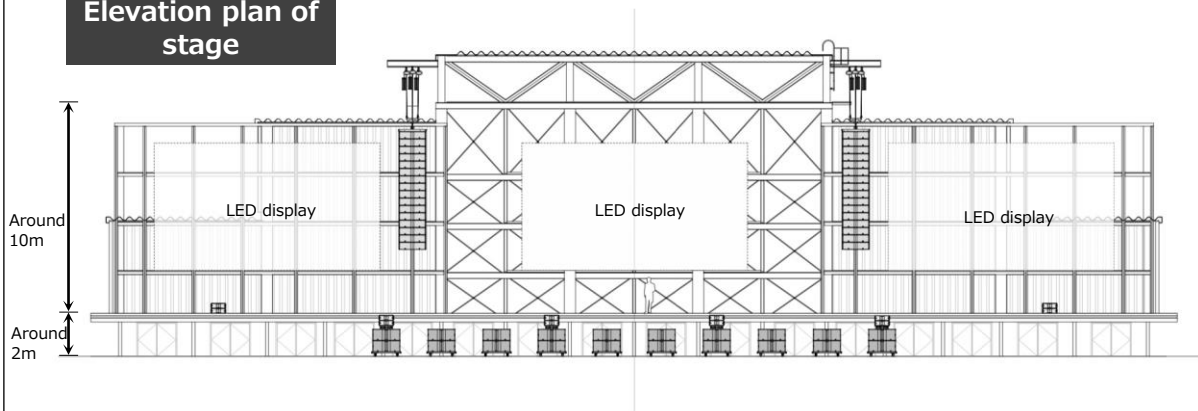


EXPO Arena (former name: Outdoor Event Space)

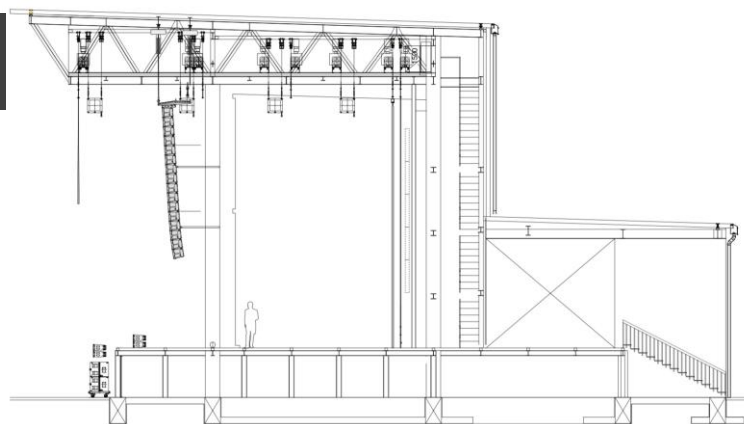
Ground plan of stage



Elevation plan of stage

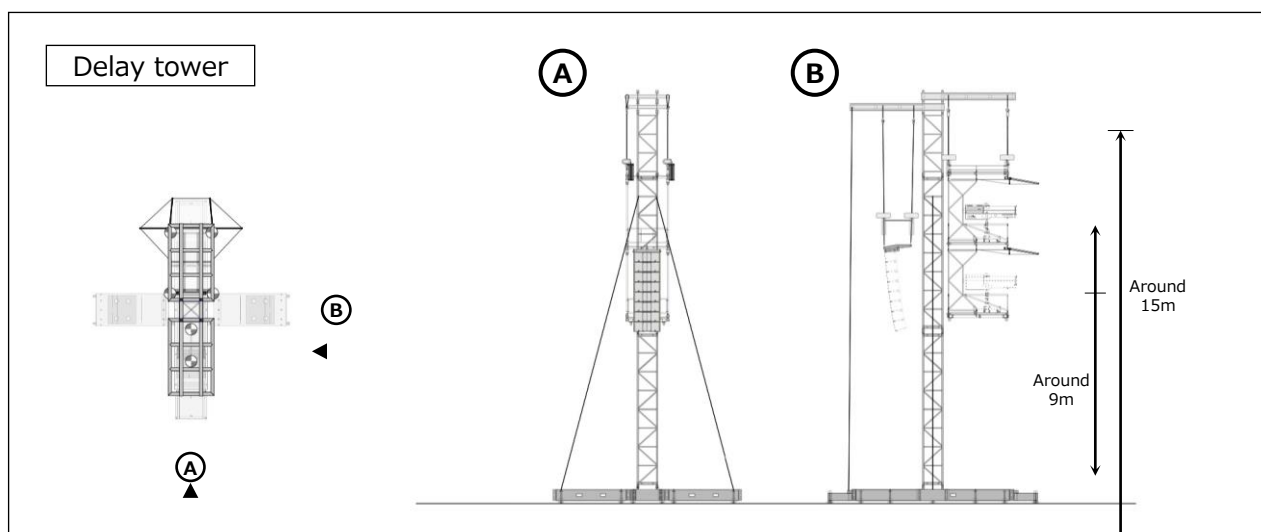


Cross-sectional plan of stage



Overview of Event Facilities

C EXPO Arena (former name: Outdoor Event Space)



※ The information is based on current plans and is subject to change.
The information is subject to change in the future.

Overview of installed equipment

Stage equipment	Hanging rod for border curtain	1 (length: 16,200 mm; automated height adjustment; load capacity: 500 kg), ladder form height 300 mm
	Hanging rod for stage set items	2 (length: 16,200 mm; automated height adjustment; load capacity: 500 kg), ladder form height 300 mm
	Hanging rod for stage set items (black rear traveller curtain)	1 (length: 16,200 mm; automated height adjustment; load capacity: 500 kg), ladder form height 300 mm
	Hanging rod for stage set items (horizon curtain)	1 (length: 16,200 mm; automated height adjustment; load capacity: 500 kg), ladder form height 300 mm
	Hanging rod for side curtain	2 (length: 7,500 mm; automated height adjustment; load capacity: 100 kg)
	Lighting truss hanging rod	4 (length: 16,200 mm; automated height adjustment; load capacity: 1,500 kg), truss 550 mm
	Border curtain	1 (width 16,200 × height 4,000 mm)
	Black rear traveller curtain	1 pair (2 of width 8,500 × height 9,250 mm), with opening and closing rail
	Horizon curtain	1 (width 16,200 × height 9,500 mm)
	Side curtain	2 pairs (width 2,000 × height 9,500 mm; 4 per pair), with opening and closing rail

Lighting	Temporarily installed power supply board equipment and transformer system for stage lighting	
	Stage left	3 single-phase lines 400A (overall main circuit) 1 pair of camlock output connector; 20 C-type power sockets (direct 20 circuits)
	Stage right	3 single-phase lines 400A (main circuit) 1 pair of camlock output connector; 20 C-type power sockets (direct 20 circuits) 3 three-phase lines 100A (main circuit); 1 pair of camlock output connector
	Stage side (location undecided)	3 single-phase lines 250A; 2 pairs of C-type 60A power sockets
	Delay tower, left side	3 single-phase lines 250A at 4 locations (for motors); 1 pair of camlock output connector 3 three-phase lines 50A (main circuit)
	Delay tower, right side	3 single-phase lines 250A at 4 locations (for motors); 1 pair of camlock output connector 3 three-phase lines 50A (main circuit)

Lighting	Rain-proof moving light	10 (SGM G-7 Spot, 500 W LED 6500 K)
	Light controller	4096 parameter (HTP/LTP) DMX 6 out / 1 in (within FOH wing)
	Other lighting equipment	1 set

Overview of Event Facilities



EXPO Arena (former name: Outdoor Event Space)

※The information is based on current plans. The information is subject to change in the future.

Sound system	Power supply board equipment and transformer system for sound system	
	Downstage on stage left and stage right	Permanently installed movable amplifier power supply: 24 circuits of C-type 30A power sockets
		Power supply for sound system (including that for amplifiers for wedge monitor speakers and other extra power supplies) : 24 circuits of C-type 30A power sockets
		Extra power supply: 6 circuits of C-type 30A power sockets
	Upstage on stage left and stage right	Sound system power supply: 6 circuits of C-type 30A power sockets
		Extra power supply: 6 circuits of C-type 30A power sockets
	Delay tower, upstage on left side	Sound system power supply: 6 circuits of C-type 30A power sockets
	Delay tower, upstage on right side	Sound system power supply: 6 circuits of C-type 30A power sockets
	Temporary FOH section	Sound system power supply: 4 circuits of C-type 30A power sockets
	In FOH wing and control room	Sound system power supply: 4 circuits of C-type 30A power sockets

Sound system	Main speaker	Main speaker	1 set of 3-way large format line source array speakers
		Front fill speaker	1 set of 2-way medium format line source array speakers
		Subwoofer speaker	1 set of flyable subwoofer speakers Touring power amplifiers for driving of above (movable) System controller
	Monitor speaker	Side fill speaker	1 set of 2-way medium format line source array speakers (6 on one side) touring power amplifiers for driving of above (movable)
		Wedge monitor speaker	1 set of 2-way full-range stage speakers Power amplifiers for driving of above
	Digital mixer (installed within FOH wing)		Mixing console 120 input, 48 mix, 2 stereo Stage in/out box
	Stage sound equipment such as microphones		Currently being arranged

Video equipment	LED display	1 main display, 2 side displays
	LED display control equipment	1 set
	4K live switcher	1
	4K system camera	2
	4K 122-zoom telephoto lens	1
	4K 24-zoom portable lens	2
	4K remote camera system	Currently being arranged
	video distribution equipment	Currently being arranged