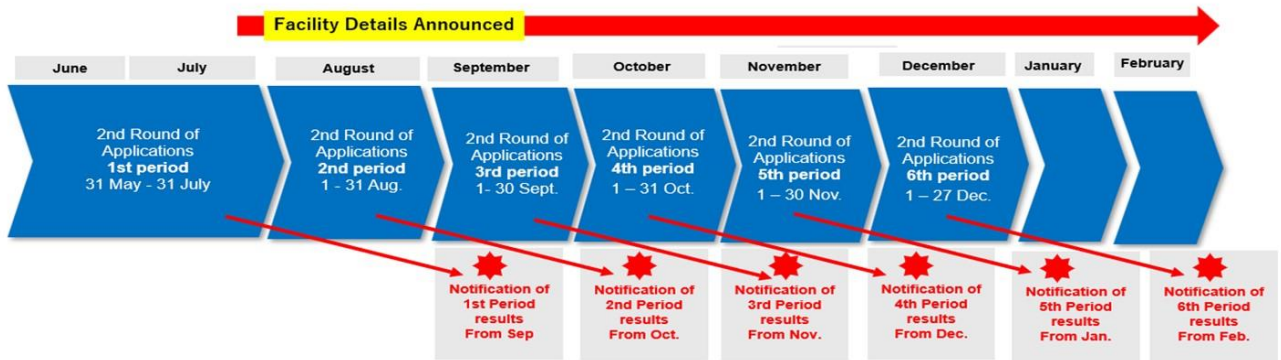


Application Guidelines

■Application Period

From 17:00 on Friday, 31 May, 2024 (Japan Standard Time)



- Applications will close once all available slots at each facility are filled.
- In the second round of applications, events shall be selected and applicants notified of their results after each period. So, there will be fewer slots available for each facility in each subsequent period. For this reason, applicants should apply early to increase the probability of being selected.
- The timing of application result notices may differ between facilities.
- Another round of applications may be held from January 2025, depending on facility vacancies.

■Types of Events Organised by the General Public

We are accepting various formats and styles of events.

*Please plan events that visitors can watch and participate in. (Events that only related people can watch and participate in are not permitted.)

■Exhibiting in the metaverse space

An available option when holding an event in the event facilities on Yumeshima Island (real space) is the holding of a virtual event simultaneously at the virtual event hall in the Metaverse space which will be developed as a Virtual Expo. It is also possible to apply for stand-alone event at the virtual event space.

■Application Procedures

If you wish to participate, please download the two files and send them to the following e-mail address.

*Applications will be closed when all the available slots at each facility are filled.

*Those who applied for the first solicitation can also enter the second solicitation.

●Entry Sheet:

<https://www.expo2025.or.jp/en/wp-content/uploads/sites/2/2024/05/f3c2f451249e1afd6fdcd35580e7265f.xlsx>

●Proposal Documents

<https://www.expo2025.or.jp/en/wp-content/uploads/sites/2/2024/05/75f4e4dd53d0bd5db2269b1527114abc.pptx>

Office of "Events Organised by the General Public" at Expo 2025 Osaka, Kansai, Japan.

Email: expo_ippansaiji_osk@jimukyoku.jp

■Cost of Participation

The costs of producing and running the events shall be borne by the event organisers.

The following three facilities are available for events.

Pop-Up Stages

Pop-Up Stages

Pop-Up Stage Outer East



Pop-Up Stage Inner East



Pop-Up Stage West



Pop-Up Stage North



Pop-Up Stage South



*Subject to change

■ Pop-Up Stages are outdoor event spaces of approximately 50 m² that face pathways and are without guest seats.

• These facilities are suitable for live music events, performances, and small-stage events.

• Use of these facilities is allocated in three-hour units: (1) 9:00 - 12:00, (2) 12:00 - 15:00, (3) 15:00 - 18:00, (4) 18:00 - 21:00. It is possible to use multiple slots. e.g. Slots 1-3 (9:00-18:00) for one event.

* The time slots include the time for set-up, rehearsals, and clear-up.

■ Notes:

• The stages are small scale, they are not suitable for events that require large-scale setup.

• These facilities are not equipped with screens or video equipment.

• These facilities are pathway-facing stages without guest seats. The stages are not suitable for symposiums and presentations that require seating.

• Rehearsals will be in the form of open rehearsals.

The facility guidelines are available here.

<https://www.expo2025.or.jp/en/wp-content/uploads/sites/2/2024/06/DOverview-of-Event-Facilities-Ver.2.5.pdf>

EXPO Arena“Matsuri”



- EXPO Arena “Matsuri” is the largest outdoor event plaza at the Expo. It does not have seating and is suitable for events such as live performances by large musical artists, outdoor festivals, etc.

- Use of the facility is granted for a full day.

- Available periods

- Select one of [A] - [C] on the entry form.

- * Multiple selections are possible. If all the options are possible for you, please write down your order of preference.

- * The time slots include the time for set-up, rehearsals, and clear-up.

[A] One- or two-day event in the first half of July

[B] One- or two-day event in late June

[C] One-day event in May, July, or August

- Expo Arena 「Matsuri」

The facility guidelines are available here.

<https://www.expo2025.or.jp/en/wp-content/uploads/sites/2/2024/06/DOverview-of-Event-Facilities-Ver.2.5.pdf>

New event space

The new event space is a special space where festivals, traditional crafts, and performing arts from around Japan and overseas are gathered in one place for visitors to see and experience. It will provide a space where everyone can interact while experiencing traditional cultures through festivals from various regions. Regarding this location, we are inviting proposals from a broad range of applicants with the goal of appealing to tourists from different regions.

(1) Stage

Stage size: approx. 70m² (14m wide and 5m deep)

LED displays will be installed (allowing documents and videos to be shown).

Number of guest seats: approx. 300–350 planned. Fully indoors.

Users may also hold exhibition-form events with the seating removed. (Users will be responsible for venue setup.)

(2) Experiential event booth

Tent size: approx. 19m² (5.4m wide and 3.6m deep).

Tents will be installed on plots in an outdoor space.

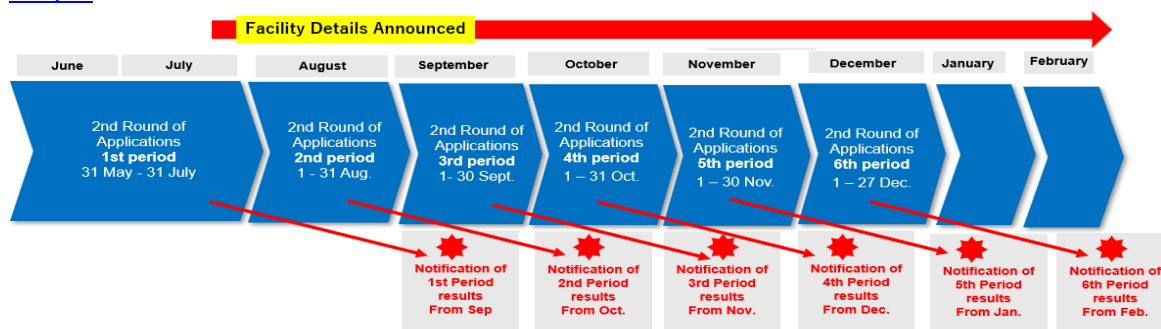
Experiential events such as crafts workshops etc. are anticipated.

*Details about this facility will be announced from July onwards. Offer notices will be issued from September.

*Applications will open on 31 May. Applicants will be emailed with the detailed information once it is confirmed. Entry information could be updated frequently.

• New Event Space The facility guidelines are available here.

<https://www.expo2025.or.jp/en/wp-content/uploads/sites/2/2024/05/824d4f0802ab90f018d03f9dbb1a8f0a.pdf>



Important Points to Note

Specifying a specific desired date and time in your application will lower the probability that your event is selected.

Applicants are requested to be as flexible as possible in the organisation of their event. Additionally, minimising the time used for activities other than the actual event, including setup, removal, and rehearsals, will increase the chances of your event being selected.

(Example)

Low probability of being selected	High probability of being selected
Requesting a specific date.	Requesting a specific date but being open to alternatives.
Requesting only a weekend or holiday.	Being open to holding the event on a weekday.
Requesting four days for set-up, event, and clear-up	Proposing an event that can be carried out from set-up to clear-up in only one day.

Evaluation / Selection

■ Selection Procedure

The judging committee, consisting of intellectuals, will be responsible for selecting the participants based on the following criteria for selection:

■ Assessment Criteria

1. Theme

Is the event in line with the theme of the Expo, what is provided regarding the challenges of solving social problems and the information in the For Applicants section above?

2. Quality

Is the quality level appropriate for an international exposition?

3. Feasibility

Is the applicant sufficiently experienced and capable of implementing the event?

4. Diversity

Does the proposal offer a range of ways to participate and involve people who have diverse backgrounds?

5. Entertaining

Will the event please spectators and participants and motivate more people to visit the Expo?

6. Future prospects

Is the content of the event sustainable and able to continue even after the Expo?

7. Expandability

Is the proposal linked to any other events that will boost the Expo apart from the event on the day?
Assessment criteria 1, 2 and 3 will be weighed heavily during evaluation.

■Notification of Evaluation Results

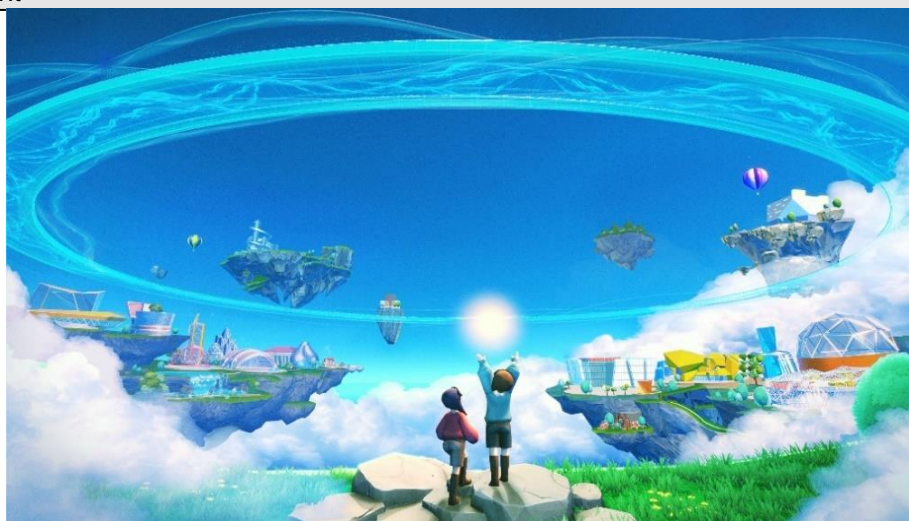
Applicants will be notified of the evaluation results by E-mail. We will not respond to any inquiries about or objections regarding the process or results of the evaluation.

The period of the notifying the results are as below.

	Application Period	Notification of Results
1st period	2024/5/31~7/31	2024/9~
2nd period	2024/8/1~8/31	2024/10~
3rd period	2024/9/1~9/30	2024/11~
4th period	2024/10/1~10/31	2024/12~
5th period	2024/11/1~11/30	2025/1~
6th period	2024/12/1~12/31	2025/2~

*Applications will close once all available slots at each facility are filled.

Virtual Event



©NTT CORPORATION

The Virtual Event allows content created by the event organiser to be deployed and distributed to people around the world in a virtual event space to be located in Virtual Expo which is developed as an application. “Virtual Event Planning and Creation Procedure” that contains the information necessary for considering the implementation of a virtual event will be available for viewing after you submit your Entry Form.

“Outline of Virtual EXPO and Virtual Events” is available here.

<https://www.expo2025.or.jp/en/wp-content/uploads/sites/2/2024/05/544dc8af2a4b27b9ab856006e8c48137.pdf>

*Please note that some of the venues for virtual events are different from those in the Yumeshima venue, so be sure to check the overview.

Cautionary Notes

Please see below URL for the cautionary notes.

<https://www.expo2025.or.jp/en/wp-content/uploads/sites/2/2024/05/a33c1f1336e82bbd9785a503c82a70b6.pdf>

FAQ

Please see below URL for answers to frequently asked questions.

<https://www.expo2025.or.jp/en/wp-content/uploads/sites/2/2024/05/f607063dfc6b77618fa6520cb5250974.pdf>

For inquiries or information about applications

Office of "Events Organized by the General Public" at Expo 2025 Osaka, Kansai, Japan.

E-mail: expo_ippansaiji_osk@jimukyoku.jp