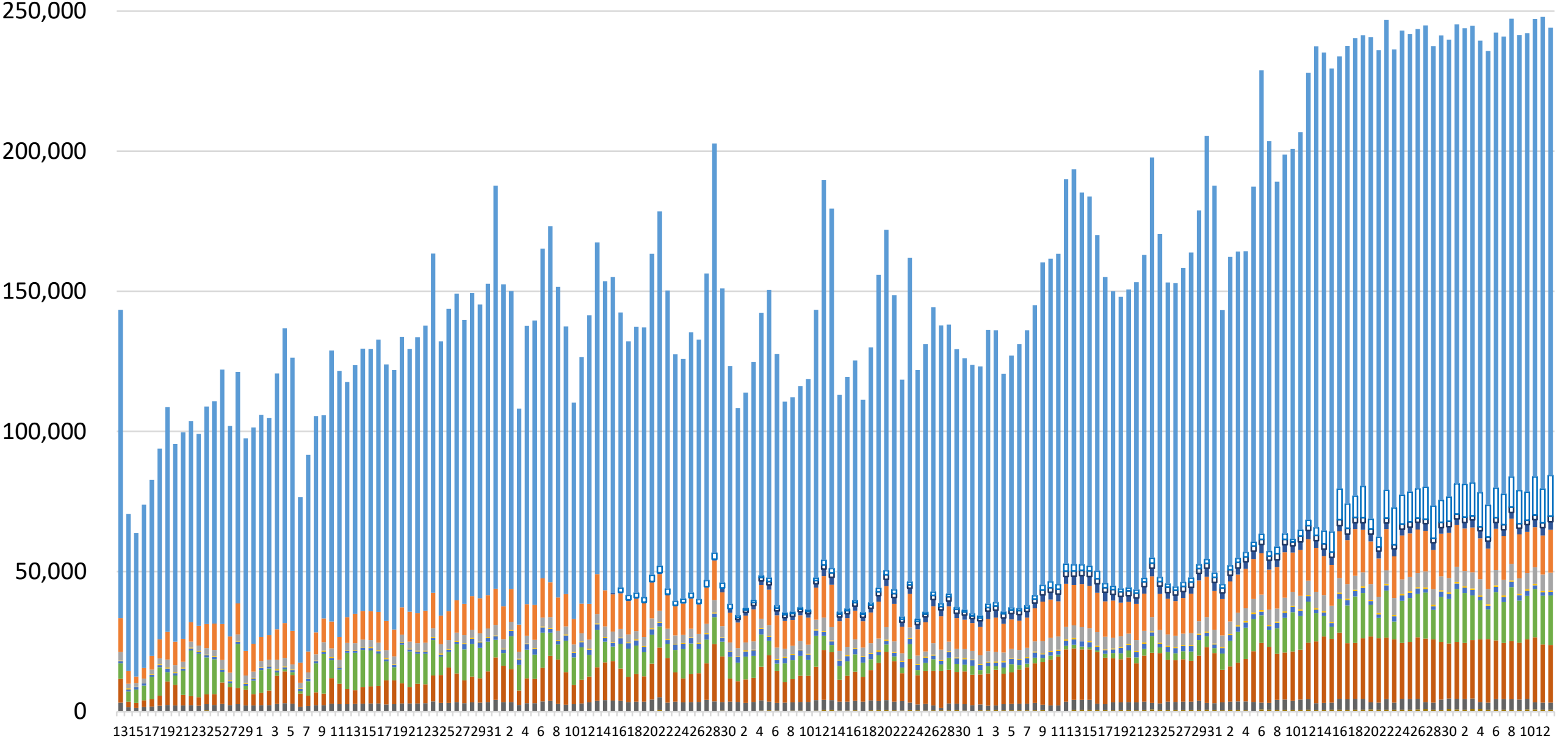


# Expo 2025 Osaka, Kansai, Japan Visitor Transportation Results

13 April-13 October

(People)



- Railway(OsakaMetro Central Line)
- e-mover (from in front of the East Gate to the West Gate)
- Sakurajima Station Shuttle Bus
- Airport bus
- Walking (From in front of the East Gate to the West Gate)
- The east-west connecting Shuttle Bus
- Shuttle service to places other than Sakurajima station
- Medium to long-distance bus

※All figures are estimates by the Japan Association for the 2025 World Exposition.  
Figures by means of transportation are preliminary and subject to change in the future.

※All figures are estimates by the Japan Association for the 2025 World Exposition.  
The figures by mode of transportation are provisional and subject to change in the future.

Since Expo Opening	13 April-13 October														
	Railway(Osaka Metro Chuo Line)						Shinkansen (New Tokaido)	Shinkansen (San'yō)	Airport Bus	Expressway Bus	Group Bus	PRR (parking), etc.	Taxi	Ship Shuttle Bus	Total
	Average number of people	Share (%)	Average number of people	Share (%)	Average number of people	Share (%)									
All days	115,953	3.511	1,578	467	1,322	878	12,060	3,716	363	1,481	7,908	12,932	2,892	376	157,689
Share (%)	73.53%	2.23%	1.00%	0.30%	0.84%	0.56%	7.65%	2.36%	0.23%	0.94%	5.01%	8.20%	1.83%	0.24%	100%
Weekdays	110,590	3,146	1,568	434	1,265	773	11,764	3,489	361	1,628	8,880	11,793	3,003	356	151,870
Share (%)	72.82%	2.07%	1.03%	0.29%	0.83%	0.51%	7.75%	2.30%	0.24%	1.07%	5.85%	7.77%	1.98%	0.23%	100%
Weekends & National Holidays	127,127	4,157	1,615	588	1,487	1,067	12,735	4,216	367	1,168	5,872	15,482	2,637	428	169,740
Share (%)	74.90%	2.45%	0.95%	0.33%	0.96%	0.63%	7.50%	2.48%	0.22%	0.69%	3.28%	9.12%	1.55%	0.25%	100%

Week26	5 October-13 October														
	Railway(Osaka Metro Chuo Line)						Shinkansen (New Tokaido)	Shinkansen (San'yō)	Airport Bus	Expressway Bus	Group Bus	PRR (parking), etc.	Taxi	Ship Shuttle Bus	Total
	Average number of people	Share (%)	Average number of people	Share (%)	Average number of people	Share (%)									
All days	179,279	11,722	1,734	-	1,365	1,136	14,971	5,759	506	1,627	16,059	21,179	3,192	710	243,279
Share (%)	73.69%	4.82%	0.71%	-	0.56%	0.47%	6.15%	2.37%	0.21%	0.67%	6.60%	8.71%	1.31%	0.29%	100%
Weekdays	178,039	10,793	1,753	-	1,339	955	15,360	5,642	511	1,904	16,328	20,633	3,779	682	242,879
Share (%)	73.30%	4.44%	0.72%	-	0.55%	0.39%	6.32%	2.32%	0.21%	0.78%	6.72%	8.50%	1.56%	0.28%	100%
Weekends & National Holidays	180,828	12,884	1,710	-	1,397	1,361	14,484	5,905	497	1,281	15,722	21,862	2,458	744	243,780
Share (%)	74.18%	5.29%	0.70%	-	0.57%	0.56%	5.94%	2.42%	0.20%	0.53%	6.45%	8.97%	1.01%	0.31%	100%

Week25	28 September-4 October														
	Railway(Osaka Metro Chuo Line)						Shinkansen (New Tokaido)	Shinkansen (San'yō)	Airport Bus	Expressway Bus	Group Bus	PRR (parking), etc.	Taxi	Ship Shuttle Bus	Total
	Average number of people	Share (%)	Average number of people	Share (%)	Average number of people	Share (%)									
All days	178,227	10,649	1,729	-	1,298	1,056	15,155	5,427	526	1,726	15,566	20,931	3,399	790	241,746
Share (%)	73.73%	4.40%	0.72%	-	0.54%	0.44%	6.27%	2.24%	0.22%	0.71%	6.44%	8.66%	1.41%	0.33%	100%
Weekdays	178,023	10,173	1,802	-	1,290	962	15,488	5,335	533	1,904	16,918	20,283	3,775	773	243,033
Share (%)	73.25%	4.19%	0.74%	-	0.53%	0.40%	6.37%	2.20%	0.22%	0.78%	6.96%	8.35%	1.55%	0.32%	100%
Weekends & National Holidays	178,738	11,838	1,646	-	1,319	1,292	14,382	5,658	507	1,281	12,682	22,548	2,459	822	238,530
Share (%)	74.93%	4.96%	0.65%	-	0.55%	0.54%	6.00%	2.37%	0.21%	0.54%	5.11%	9.45%	1.03%	0.35%	100%

Week24	21 September-27 September														
	Railway(Osaka Metro Chuo Line)						Shinkansen (New Tokaido)	Shinkansen (San'yō)	Airport Bus	Expressway Bus	Group Bus	PRR (parking), etc.	Taxi	Ship Shuttle Bus	Total
	Average number of people	Share (%)	Average number of people	Share (%)	Average number of people	Share (%)									
All days	180,192	9,906	1,665	-	1,300	1,100	14,959	5,390	513	1,726	13,274	21,780	3,252	743	241,829
Share (%)	74.51%	4.10%	0.69%	-	0.54%	0.45%	6.19%	2.23%	0.21%	0.71%	5.49%	9.01%	1.34%	0.31%	100%
Weekdays	179,647	10,338	1,770	-	1,296	962	15,398	5,043	515	1,904	15,742	21,037	3,825	726	243,837
Share (%)	73.67%	4.24%	0.73%	-	0.53%	0.39%	6.31%	2.07%	0.21%	0.78%	6.46%	8.63%	1.57%	0.30%	100%
Weekends & National Holidays	180,918	9,329	1,625	-	1,307	1,285	14,374	5,852	511	1,489	9,983	22,771	2,488	767	239,152
Share (%)	75.65%	3.90%	0.64%	-	0.55%	0.54%	6.01%	2.45%	0.21%	0.62%	4.17%	9.52%	1.04%	0.32%	100%

Week23	14 September-20 September														
	Railway(Osaka Metro Chuo Line)						Shinkansen (New Tokaido)	Shinkansen (San'yō)	Airport Bus	Expressway Bus	Group Bus	PRR (parking), etc.	Taxi	Ship Shuttle Bus	Total
	Average number of people	Share (%)	Average number of people	Share (%)	Average number of people	Share (%)									
All days	176,364	7,680	1,952	-	1,307	1,058	15,437	5,325	490	1,637	11,610	22,141	3,258	716	236,977
Share (%)	74.42%	3.24%	0.82%	-	0.55%	0.45%	6.51%	2.25%	0.19%	0.69%	4.90%	9.34%	1.37%	0.30%	100%
Weekdays	174,417	9,621	1,981	-	1,287	930	16,079	5,063	504	1,904	14,571	21,264	3,825	709	238,335
Share (%)	73.18%	4.04%	0.83%	-	0.54%	0.39%	6.75%	2.12%	0.21%	0.80%	6.11%	8.92%	1.60%	0.30%	100%
Weekends & National Holidays	178,960	5,092	1,915	-	1,335	1,290	14,582	5,673	471	1,281	7,662	23,310	2,459	822	235,167
Share (%)	76.10%	2.17%	0.81%	-	0.57%	0.52%	6.20%	2.41%	0.20%	0.54%	3.26%	9.91%	1.06%	0.31%	100%

Week22	7 September-13 September														
	Railway(Osaka Metro Chuo Line)						Shinkansen (New Tokaido)	Shinkansen (San'yō)	Airport Bus	Expressway Bus	Group Bus	PRR (parking), etc.	Taxi	Ship Shuttle Bus	Total
	Average number of people	Share (%)	Average number of people	Share (%)	Average number of people	Share (%)									
All days	153,006	1,949	1,828	581	1,186	950	15,193	5,070	487	1,726	11,157	18,730	3,242	639	209,249
Share (%)	73.12%	0.93%	0.87%	0.28%	0.57%	0.45%	7.26%	2.42%	0.23%	0.82%	5.33%	8.95%	1.55%	0.31%	100%
Weekdays	147,837	1,845	1,879	396	1,465	860	15,264	4,826	494	1,904	12,412	17,800	3,555	647	204,740
Share (%)	72.21%	0.90%	0.92%	0.19%	0.62%	0.42%	7.46%	2.36%	0.24%	0.93%	6.06%	8.76%	1.74%	0.32%	100%
Weekends & National Holidays	165,927	2,210	1,701	469	1,491	1,173	15,015	5,680	468	1,281	8,019	21,054	2,461	617	220,522
Share (%)	75.24%	1.00%	0.77%	0.21%	0.68%	0.53%	6.81%	2.58%	0.21%	0.58%	3.64%	6.58%	1.12%	0.28%	100%

Week21	31 August-6 September														
	Railway(Osaka Metro Chuo Line)						Shinkansen (New Tokaido)	Shinkansen (San'yō)	Airport Bus	Expressway Bus	Group Bus	PRR (parking), etc.	Taxi	Ship Shuttle Bus	Total
	Average number of people	Share (%)	Average number of people	Share (%)	Average number of people	Share (%)									
All days	128,245	1,474	1,852	581	1,186	835	13,987	4,692	453	1,726	8,611	15,774	2,916	496	176,901
Share (%)	72.50%	0.83%	1.05%	0.33%	0.67%	0.47%	7.91%	2.65%	0.26%	0.98%	4.87%	8.92%	1.65%	0.28%	100%
Weekdays	116,123	1,403	1,858	404	1,247	755	13,871	4,474	460	1,904	9,723	14,240	3,112	421	164,328
Share (%)	70.67%	0.85%	1.13%	0.25%	0.76%	0.46%	8.44%	2.72%	0.28%	1.16%	5.92%	8.67%	1.89%	0.26%	100%
Weekends & National Holidays	158,550	1,650	1,837	1,024	1,034	1,033	14,278	5,238	438	1,281	5,834	19,608	2,426	685	208,336
Share (%)	76.10%	0.79%	0.88%	0.49%	0.50%	0.50%	6.85%	2.51%	0.21%	0.61%	2.80%	9.41%	1.16%	0.33%	100%

Week20	24 August-30 August														
	Railway(Osaka Metro Chuo Line)						Shinkansen (New Tokaido)	Shinkansen (San'yō)	Airport Bus	Expressway Bus	Group Bus	PRR (parking), etc.	Taxi	Ship Shuttle Bus	Total
	Average number of people	Share (%)	Average number of people	Share (%)	Average number of people	Share (%)									
All days	126,245	1,318	1,806	437	1,326	683	13,402	4,352	383	1,726	3,251	16,212	2,862	587	169,019
Share (%)	74.69%	0.78%	1.07%	0.26%	0.78%	0.40%	7.93%	2.57%	0.23%	1.02%	1.92%	9.59%	1.69%	0.35%	100%
Weekdays	119,594	1,287	1,843	406	1,679	621	13,291	4,158	377	1,904	3,378	15,112	3,073	549	161,436
Share (%)	74.08%	0.80%	1.14%	0.25%	0.78%	0.38%	8.23%	2.58%	0.23%	1.18%	2.09%	9.36%	1.90%	0.34%	100%
Weekends & National Holidays	142,872	1,398	1,715	515	1,499	838	13,680	4,835	397	1,281	2,935	19,961	2,334	683	187,978
Share (%)	76.00%	0.74%	0.91%	0.27%	0.80%	0.45%	7.28%	2.57%	0.21%	0.68%	1.56%	10.09%	1.24%	0.36%	100%

Week19	17 August-23 August														
	Railway(Osaka Metro Chuo Line)						Shinkansen (New Tokaido)	Shinkansen (San'yō)	Airport Bus	Expressway Bus	Group Bus	PRR (parking), etc.	Taxi	Ship Shuttle Bus	Total
	Average number of people	Share (%)	Average number of people	Share (%)	Average number of people	Share (%)									
All days	118,874	1,225	1,731	462	1,373	669	12,864	4,090	390	1,637	2,627	15,984	2,705	544	159,714
Share (%)	74.43%	0.77%	1.08%	0.29%	0.86%	0.42%	8.05%	2.56%	0.24%	1.02%	1.64%	10.01%	1.69%	0.34%	100%
Weekdays	113,364	1,087	1,730	411	1,309	615	12,570	3,820	407	1,779	2,222	15,465	2,907	488	153,021
Share (%)	74.08%	0.71%	1.13%	0.27%	0.81%	0.40%	8.21%	2.50%	0.27%	1.16%	1.45%	10.11%	1.90%	0.32%	100%
Weekends & National Holidays	132,649	1,572	1,733	589	1,709	804	13,600	4,767	348	1,281	3,638	17,281	2,202	682	176,448
Share (%)	75.18%	0.89%	0.98%	0.33%	0.97%	0.46%	7.71%	2.70%	0.20%	0.73%	2.06%	9.79%	1.25%	0.39%	100%

Week18	10 August-16 August														
	Railway(Osaka Metro Chuo Line)						Shinkansen (New Tokaido)	Shinkansen (San'yō)	Airport Bus	Expressway Bus	Group Bus	PRR (parking), etc.	Taxi	Ship Shuttle Bus	Total
	Average number of people	Share (%)	Average number of people	Share (%)	Average number of people	Share (%)									
All days	134,970	2,126	1,864	560	1,605	750	14,389	4,695	342	1,637	984	17,904	2,973	373	178,266
Share (%)	75.71%	1.19%	1.05%	0.31%	0.90%	0.42%	8.07%	2.63%	0.19%	0.92%	0.55%	10.04%			

Week15		20 July-26 July														
		Railway(Osaka Metro Chuo Line)						Shin-Keisei Metro Bus	Keio Metro Bus	Airport Bus	Expressway Bus	Group Bus	PRR (parking), etc.	Taxi	Ship Shuttle Bus	Total
		Average number of people	Share (%)	Average number of people	Share (%)	Average number of people	Share (%)									
All days	Average number of people	106,290	1.002	1,284	528	1,524	-	11,781	3,393	355	1,637	2,914	13,113	2,714	454	142,652
	Share (%)	74.51%	0.70%	0.90%	0.37%	1.07%	-	8.26%	2.38%	0.25%	1.15%	2.04%	9.19%	1.90%	0.32%	100%
Weekdays	Average number of people	99,998	763	1,123	504	1,302	-	10,324	2,831	356	1,904	3,010	11,909	2,665	418	133,415
	Share (%)	74.95%	0.57%	0.84%	0.38%	0.98%	-	7.74%	2.12%	0.27%	1.43%	2.26%	8.93%	2.00%	0.31%	100%
Weekends & National Holidays	Average number of people	114,679	1,320	1,499	560	1,820	-	13,725	4,143	354	1,281	2,787	14,719	2,779	502	154,968
	Share (%)	74.00%	0.85%	0.97%	0.36%	1.17%	-	8.86%	2.67%	0.23%	0.83%	1.80%	9.50%	1.79%	0.32%	100%

Week14		13 July-19 July														
		Railway(Osaka Metro Chuo Line)						Shin-Keisei Metro Bus	Keio Metro Bus	Airport Bus	Expressway Bus	Group Bus	PRR (parking), etc.	Taxi	Ship Shuttle Bus	Total
		Average number of people	Share (%)	Average number of people	Share (%)	Average number of people	Share (%)									
All days	Average number of people	97,264	890	1,270	439	1,298	-	11,393	3,533	352	1,726	4,352	11,098	3,379	430	133,527
	Share (%)	72.84%	0.67%	0.95%	0.33%	0.97%	-	8.53%	2.65%	0.26%	1.29%	3.26%	8.31%	2.53%	0.32%	100%
Weekdays	Average number of people	85,979	892	1,184	376	1,103	-	10,288	3,161	334	1,904	5,933	9,400	3,378	366	119,844
	Share (%)	71.74%	0.56%	0.92%	0.31%	0.92%	-	8.58%	2.64%	0.28%	1.59%	4.20%	7.84%	2.89%	0.31%	100%
Weekends & National Holidays	Average number of people	125,475	1,439	1,487	598	1,787	-	14,155	4,463	397	1,281	2,850	15,343	3,379	593	167,735
	Share (%)	74.81%	0.86%	0.89%	0.36%	1.07%	-	8.44%	2.66%	0.24%	0.76%	1.58%	9.15%	2.01%	0.35%	100%

Week13		6 July-12 July														
		Railway(Osaka Metro Chuo Line)						Shin-Keisei Metro Bus	Keio Metro Bus	Airport Bus	Expressway Bus	Group Bus	PRR (parking), etc.	Taxi	Ship Shuttle Bus	Total
		Average number of people	Share (%)	Average number of people	Share (%)	Average number of people	Share (%)									
All days	Average number of people	94,068	776	1,093	397	1,120	-	10,838	3,485	347	1,726	6,427	10,759	3,210	357	131,218
	Share (%)	71.69%	0.59%	0.83%	0.30%	0.85%	-	8.26%	2.66%	0.26%	1.32%	4.90%	8.20%	2.45%	0.27%	100%
Weekdays	Average number of people	84,782	603	1,016	363	948	-	9,894	3,121	330	1,904	7,461	9,222	3,226	301	120,241
	Share (%)	70.51%	0.50%	0.84%	0.30%	0.79%	-	8.23%	2.60%	0.27%	1.58%	6.20%	7.67%	2.68%	0.25%	100%
Weekends & National Holidays	Average number of people	117,284	1,439	1,285	482	1,550	-	13,200	4,395	392	1,281	3,842	14,601	3,171	498	158,662
	Share (%)	73.92%	0.76%	0.81%	0.30%	0.98%	-	8.32%	2.77%	0.25%	0.81%	2.42%	9.20%	2.00%	0.31%	100%

Week12		29 June-5 July														
		Railway(Osaka Metro Chuo Line)						Shin-Keisei Metro Bus	Keio Metro Bus	Airport Bus	Expressway Bus	Group Bus	PRR (parking), etc.	Taxi	Ship Shuttle Bus	Total
		Average number of people	Share (%)	Average number of people	Share (%)	Average number of people	Share (%)									
All days	Average number of people	92,160	1,013	1,023	418	1,018	-	11,069	3,266	293	1,726	7,495	11,070	3,244	272	130,594
	Share (%)	70.57%	0.78%	0.78%	0.32%	0.78%	-	8.48%	2.50%	0.22%	1.32%	5.74%	8.48%	2.48%	0.21%	100%
Weekdays	Average number of people	85,927	892	977	400	937	-	10,556	3,011	284	1,904	8,387	8,919	3,299	236	122,554
	Share (%)	70.13%	0.68%	0.80%	0.33%	0.76%	-	8.62%	2.46%	0.23%	1.55%	6.85%	7.28%	2.69%	0.19%	100%
Weekends & National Holidays	Average number of people	107,745	1,476	1,209	463	1,223	-	12,350	3,903	315	1,281	5,263	16,447	3,106	593	150,789
	Share (%)	71.46%	0.98%	0.80%	0.31%	0.81%	-	8.19%	2.59%	0.21%	0.85%	3.49%	10.91%	2.06%	0.24%	100%

Week11		22 June-28 June														
		Railway(Osaka Metro Chuo Line)						Shin-Keisei Metro Bus	Keio Metro Bus	Airport Bus	Expressway Bus	Group Bus	PRR (parking), etc.	Taxi	Ship Shuttle Bus	Total
		Average number of people	Share (%)	Average number of people	Share (%)	Average number of people	Share (%)									
All days	Average number of people	105,271	1,696	-	433	-	-	11,642	3,364	319	1,726	8,757	12,438	3,364	199	147,289
	Share (%)	71.47%	1.15%	-	0.29%	-	-	7.90%	2.28%	0.22%	1.17%	5.95%	8.44%	2.28%	0.13%	100%
Weekdays	Average number of people	95,826	1,571	-	407	-	-	11,108	3,082	309	1,904	9,324	10,243	3,431	167	135,585
	Share (%)	70.68%	1.16%	-	0.30%	-	-	8.19%	2.23%	0.23%	1.40%	6.88%	7.55%	2.53%	0.16%	100%
Weekends & National Holidays	Average number of people	128,884	2,007	-	499	-	-	12,978	4,068	346	1,281	7,339	17,927	3,194	278	176,549
	Share (%)	73.00%	1.14%	-	0.28%	-	-	7.35%	2.30%	0.20%	0.73%	4.16%	10.15%	1.81%	0.16%	100%

Week10		15 June-21 June														
		Railway(Osaka Metro Chuo Line)						Shin-Keisei Metro Bus	Keio Metro Bus	Airport Bus	Expressway Bus	Group Bus	PRR (parking), etc.	Taxi	Ship Shuttle Bus	Total
		Average number of people	Share (%)	Average number of people	Share (%)	Average number of people	Share (%)									
All days	Average number of people	106,923	1,833	-	455	-	-	12,451	3,332	332	1,726	8,665	12,038	3,688	268	149,423
	Share (%)	71.56%	1.23%	-	0.30%	-	-	8.33%	2.23%	0.22%	1.16%	5.80%	8.06%	2.47%	0.18%	100%
Weekdays	Average number of people	101,147	1,735	-	433	-	-	12,186	3,115	325	1,904	9,605	10,471	3,499	226	142,476
	Share (%)	70.99%	1.22%	-	0.30%	-	-	8.55%	2.19%	0.23%	1.34%	6.74%	7.35%	2.46%	0.16%	100%
Weekends & National Holidays	Average number of people	121,363	2,336	-	510	-	-	13,113	3,876	350	1,281	5,216	15,955	4,163	361	166,732
	Share (%)	72.76%	1.40%	-	0.31%	-	-	7.86%	2.32%	0.21%	0.77%	3.79%	9.57%	2.50%	0.22%	100%

Week 9		8 June-14 June														
		Railway(Osaka Metro Chuo Line)						Shin-Keisei Metro Bus	Keio Metro Bus	Airport Bus	Expressway Bus	Group Bus	PRR (parking), etc.	Taxi	Ship Shuttle Bus	Total
		Average number of people	Share (%)	Average number of people	Share (%)	Average number of people	Share (%)									
All days	Average number of people	100,468	-	-	-	-	-	11,850	3,137	314	1,698	9,480	11,073	3,019	141	141,181
	Share (%)	71.16%	-	-	-	-	-	8.39%	2.22%	0.22%	1.20%	6.71%	7.84%	2.14%	0.10%	100%
Weekdays	Average number of people	96,435	-	-	-	-	-	11,636	2,960	318	1,865	10,735	9,627	2,916	129	136,623
	Share (%)	70.59%	-	-	-	-	-	8.82%	2.17%	0.23%	1.37%	7.86%	7.05%	2.13%	0.09%	100%
Weekends & National Holidays	Average number of people	110,550	-	-	-	-	-	12,385	3,580	303	1,281	6,342	14,689	3,275	172	152,578
	Share (%)	72.46%	-	-	-	-	-	8.12%	2.35%	0.20%	0.84%	4.16%	9.63%	2.15%	0.11%	100%

Week 8		1 June-7 June														
		Railway(Osaka Metro Chuo Line)						Shin-Keisei Metro Bus	Keio Metro Bus	Airport Bus	Expressway Bus	Group Bus	PRR (parking), etc.	Taxi	Ship Shuttle Bus	Total
		Average number of people	Share (%)	Average number of people	Share (%)	Average number of people	Share (%)									
All days	Average number of people	106,277	-	-	-	-	-	11,891	3,074	324	1,726	9,305	10,812	3,074	164	146,648
	Share (%)	72.47%	-	-	-	-	-	8.11%	2.10%	0.22%	1.18%	6.35%	7.37%	2.10%	0.11%	100%
Weekdays	Average number of people	100,398	-	-	-	-	-	11,804	2,861	319	1,904	10,544	9,325	2,938	148	140,151
	Share (%)	71.64%	-	-	-	-	-	8.42%	2.04%	0.23%	1.36%	7.46%	6.65%	2.10%	0.11%	100%
Weekends & National Holidays	Average number of people	120,974	-	-	-	-	-	12,113	3,605	337	1,281	6,433	14,529	3,415	205	162,889
	Share (%)	74.27%	-	-	-	-	-	7.43%	2.21%	0.21%	0.79%	3.95%	8.92%	2.10%	0.13%	100%

Week 7		25 May-31 May														
		Railway(Osaka Metro Chuo Line)						Shin-Keisei Metro Bus	Keio Metro Bus	Airport Bus	Expressway Bus	Group Bus	PRR (parking), etc.	Taxi	Ship Shuttle Bus	Total
		Average number of people	Share (%)	Average number of people	Share (%)	Average number of people	Share (%)									
All days	Average number of people	112,383	-	-	-	-	-	11,751	3,100	319	1,405	9,486	10,723	3,198	183	152,549
	Share (%)	73.67%	-	-	-	-	-	7.70%	2.03%	0.21%	0.92%	6.22%	7.03%	2.10%	0.12%	100%
Weekdays	Average number of people	106,976	-	-	-	-	-	11,822	2,932	329	1,555	10,938	9,451	3,087	175	147,265
	Share (%)	72.64%	-	-	-	-	-	8.03%	1.99%	0.22%	1.06%	7.43%	6.42%	2.10%	0.12%	100%
Weekends & National Holidays	Average number of people	125,901	-	-	-	-	-	11,573	3,520	293	1,031	5,859	13,904	3,475	203	165,757
	Share (%)	75.96%	-	-	-	-	-	6.98%	2.12%	0.18%	0.62%	3.53%	8.39%	2.10%	0.12%	100%

Week 6		18 May-24 May														
		Railway(Osaka Metro Chuo Line)						Shin-Keisei Metro Bus	Keio Metro Bus	Airport Bus	Expressway Bus	Group Bus	PRR (parking), etc.	Taxi	Ship Shuttle Bus	Total
		Average number of people	Share (%)	Average number of people	Share (%)	Average number of people	Share (%)									
All days	Average number of people	100,272	-	-	-	-	-	10,739	2,832	305	780	10,273	7,769	2,851	187	136,008
	Share (%)	73.72%	-	-	-	-	-	7.90%	2.08%	0.23%	0.57%	7.55%	5.71%	2.10%	0.14%	100%
Weekdays	Average number of people	102,999	-	-	-	-	-	11,050	2,751	308	780	12,124	7,190	2,927	176	139,605
	Share (%)	73.28%	-	-	-	-	-	7.92%	1.97%	0.22%	0.56%	8.68%	5.15%	2.10%	0.13%	100%
Weekends & National Holidays	Average number of people	95,203	-	-</												

Week 3		27 April-3 May														
		Railway(Osaka Metro Chuo Line)					Shinkansen Station Shuttle Bus	Other Station Shuttle Buses	Airport Bus	Expressway Bus	Group Bus	PRR (parking), etc.	Taxi	Ship Shuttle Bus	Total	
		Average number of people	Share (%)	Share (%)	Share (%)	Share (%)										
All days	Average number of people	79,885	-	-	-	-	-	10,108	2,506	293	780	5,759	5,980	2,257	101	107,671
	Share (%)	74.19%	-	-	-	-	-	9.39%	2.33%	0.27%	0.72%	5.35%	5.55%	2.10%	0.09%	100%
Weekdays	Average number of people	79,192	-	-	-	-	-	9,552	2,211	275	780	9,101	4,895	2,272	79	108,357
	Share (%)	73.08%	-	-	-	-	-	8.82%	2.04%	0.25%	0.72%	8.40%	4.52%	2.10%	0.07%	100%
Weekends & National Holidays	Average number of people	80,810	-	-	-	-	-	10,850	2,900	318	780	1,304	7,428	2,238	130	106,757
	Share (%)	75.70%	-	-	-	-	-	10.16%	2.72%	0.30%	0.73%	1.22%	6.96%	2.10%	0.12%	100%

Week 2		20 April-26 April														
		Railway(Osaka Metro Chuo Line)					Shinkansen Station Shuttle Bus	Other Station Shuttle Buses	Airport Bus	Expressway Bus	Group Bus	PRR (parking), etc.	Taxi	Ship Shuttle Bus	Total	
		Average number of people	Share (%)	Share (%)	Share (%)	Share (%)										
All days	Average number of people	76,077	-	-	-	-	-	8,750	2,330	294	780	10,466	4,608	2,216	162	105,683
	Share (%)	71.99%	-	-	-	-	-	8.28%	2.20%	0.28%	0.74%	9.90%	4.36%	2.10%	0.15%	100%
Weekdays	Average number of people	74,217	-	-	-	-	-	8,005	2,127	294	780	13,219	3,443	2,189	157	104,431
	Share (%)	71.07%	-	-	-	-	-	7.67%	2.04%	0.28%	0.75%	12.66%	3.30%	2.10%	0.15%	100%
Weekends & National Holidays	Average number of people	80,728	-	-	-	-	-	10,613	2,837	294	780	3,584	7,523	2,281	173	108,813
	Share (%)	74.19%	-	-	-	-	-	9.75%	2.61%	0.27%	0.72%	3.29%	6.91%	2.10%	0.16%	100%

Week 1		13 April-19 April														
		Railway(Osaka Metro Chuo Line)					Shinkansen Station Shuttle Bus	Other Station Shuttle Buses	Airport Bus	Expressway Bus	Group Bus	PRR (parking), etc.	Taxi	Ship Shuttle Bus	Total	
		Average number of people	Share (%)	Share (%)	Share (%)	Share (%)										
All days	Average number of people	69,517	-	-	-	-	-	6,334	2,027	229	851	5,827	4,179	1,916	82	90,970
	Share (%)	76.42%	-	-	-	-	-	6.96%	2.23%	0.25%	0.94%	6.41%	4.59%	2.11%	0.09%	100%
Weekdays	Average number of people	59,283	-	-	-	-	-	4,479	1,649	210	780	6,376	2,487	1,613	57	76,935
	Share (%)	77.06%	-	-	-	-	-	5.82%	2.14%	0.27%	1.01%	8.29%	3.23%	2.10%	0.07%	100%
Weekends & National Holidays	Average number of people	95,104	-	-	-	-	-	10,970	2,971	277	1,030	4,454	8,408	2,675	145	126,056
	Share (%)	78.45%	-	-	-	-	-	8.70%	2.36%	0.22%	0.82%	3.53%	6.67%	2.12%	0.11%	100%