










Sakurajima Station Bus Terminal Info

A direct shuttle bus runs from JR Sakurajima Station (JR Yumesaki Line) to Yumeshima Transportation Terminal 1 (West Gate of the Expo site).

For Visitors to Expo 2025 Osaka, Kansai

-  For Visitors to Expo 2025 Osaka, Kansai
-  For Visitors Arriving via the Osaka Metro Chuo Line (Direct Train Connection to the Expo)
-  For Visitors Using the Shuttle Bus from JR Sakurajima Station
- [Sakurajima Station Bus Terminal Info](#)
-  For Visitors Using Shuttle Buses from Major Nearby Stations
- Shin-Osaka Station Bus Stop
- Osaka Station (Umekita) Bus Stop
- Osaka Station (Marubiru) Bus Stop
- Nakanoshima Station Bus Stop
- Namba Station Bus Stop
- Kintetsu Abenobashi Station Bus Stop
- Osaka Uehommachi Station Bus Stop
- Sakai/Sakaihigashi Station Bus Stop
- JR/Hanshin Amagasaki Station Bus Stop

-  For Visitors Traveling by Car or Motorcycle
- Maishima Park & Ride Parking Lot Info
- Amagasaki/Sakai Park & Ride Parking Lot Info
-  For Visitors Traveling by Expressway Bus or Airport Bus
-  For Visitors Traveling by Ship (Passenger Ship or Ferry)
-  For Visitors Traveling by Bicycle
-  For Visitors Traveling by Taxi and Users of Accessible Parking Lots

For Visitors Leaving Expo 2025 Osaka, Kansai

Traffic Information

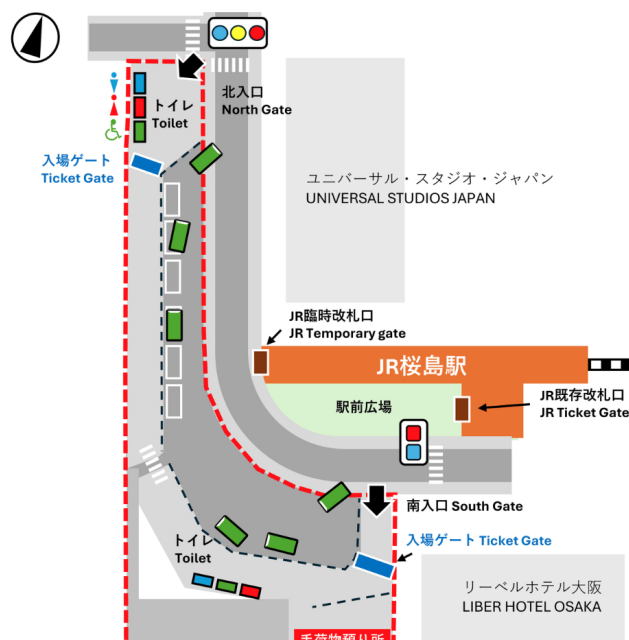
Points to Note and FAQ

Points to Note and FAQ

Location of the Sakurajima Station Bus Terminal



Directions to the Sakurajima Station Bus Terminal



[Restrictions on Large Baggage](#)

[Info for Group Tour Companies and Taxi Companies](#)

The entry routes to the Sakurajima Station Bus Terminal vary depending on the time of day and the situation during peak times. Whether you use the existing ticket gate or the temporary ticket gate of Sakurajima Station, the local staff will guide you after you exit either gate.

[Open in Google Maps](#)

About Shuttle Bus Usage and Payment

You must pay to ride the shuttle bus from the Sakurajima Station Bus Terminal. Those who have paid in advance get priority when boarding the shuttle bus. Spaces on the buses are also available for wheelchairs and strollers that cannot be folded. Please check their availability before purchasing a ticket. Access the following link to download the dedicated app and make a reservation in advance.

[KANSAI MaaS](#)

Restrictions on Large Baggage

To maintain order as well as carry out safety and security measures, bringing in large baggage is prohibited at Expo 2025 Osaka, Kansai. When traveling from far away, please leave your baggage in a locker at your hotel, station or airport near your departure point in advance. For details, see the Restrictions on Large Baggage page.

[Restrictions on Large Baggage](#)

EXPO 2025 Transportation Information

For Visitors to Expo 2025 Osaka, Kansai

- [For Visitors Arriving via the Osaka Metro Chuo Line \(Direct Train Connection to the Expo\)](#)
- [For Visitors Using the Shuttle Bus from JR Sakurajima Station](#)
- [For Visitors Using Shuttle Buses from Major Nearby Stations](#)
- [For Visitors Traveling by Car or Motorcycle](#)
- [For Visitors Traveling by Expressway Bus or Airport Bus](#)
- [For Visitors Traveling by Ship \(Passenger Ship or Ferry\)](#)
- [For Visitors Traveling by Bicycle](#)
- [For Visitors Traveling by Taxi and Users of Accessible Parking Lots](#)

For Visitors Leaving Expo 2025 Osaka, Kansai

- [For Visitors Leaving Expo 2025 Osaka, Kansai](#)
- [Yumeshima Terminal Bus Stop Info](#)

Traffic Information

- [Train Status Information](#)
- [Bus Status Information](#)
- [Terminal 1 Bus Departure Information](#)

Points to Note and FAQ

- [Restrictions on Large Baggage](#)
- [Info for Group Tour Companies and Taxi Companies](#)
- [Inquiries](#)

